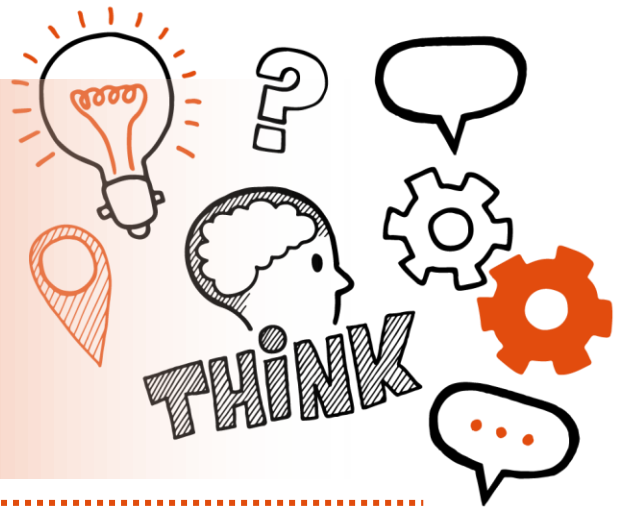


Think about

Observation of Practice

Level 5 ST0215 Healthcare Assistant
Practitioner V1.0



On the day of this assessment you will carry out:



A 90-120 minute observation



Face-to-face



In your workplace



With an end-point assessor



Key point

Your end-point assessor will need to stop the observation if you demonstrate any unsafe practices or breaches of professional codes of conduct.



Do

- Review the criteria associated with the observation of practice- this can be found in the EPA Kit and in the table at the end of this document
- Review relevant legislations, regulations and your organisation's policies and procedures
- Ensure a quiet room is available and that there are no interruptions
- Discuss the activities you need to demonstrate with your manager



Don't

- Forget to bring your ID
- Forget to plan
- Forget to tell your colleagues you are being assessed and identify those who can assist you during the observation
- Forget to obtain consent from patients who are present while you are being observed



Next steps

- Results can take up to 7 working days to be confirmed
- Your manager or training provider will inform you of the results



Resits

- If you do not achieve a pass result on the observation of practice you can resit the assessment





Use the table below to plan and prepare for the observation of practice

(P) indicates pass criteria

Assessment criteria	Key points to remember
Responsibilities and duty of the role	
(P) Undertake defined clinical or therapeutic interventions appropriately delegated by a Registered Practitioner (S1)	
Team Working	
(P) Promote effective inter-professional and multi-disciplinary team working with peers, colleagues and staff from other agencies (S5)	



(P) Provide appropriate leadership within the scope of the role (S5)

Communication

(P) Communicate complex sensitive information through a variety of methods (S7)

(P) Manage information, keeping accurate records and ensuring confidentiality (S7)



Person-centred care and wellbeing

(P) Demonstrate and promote what it means in practice to provide person-centred care and support (S8)

Risk management

(P) Use and promote a range of techniques to prevent the spread of infection including hand hygiene, the use of Personal Protective Equipment (PPE) and waste management (S10)

(P) Promote and maintain a safe and healthy working environment (S10)



<p>(P) Identify and manage risks (S10)</p>	
<p>Behaviours</p>	
<p>(P) Treat people with dignity, respecting individual's diversity, beliefs, culture, values, needs, privacy and preferences (B1)</p>	
<p>(P) Show respect and empathy for those you work with; be adaptable, reliable and consistent (B2)</p>	



<p>(P) Have the courage to challenge areas of concern and work to best practice (B3)</p>	
<p>(P) Be adaptable, reliable and consistent (B4)</p>	
<p>(P) Show discretion and self-awareness (B5)</p>	

V2

