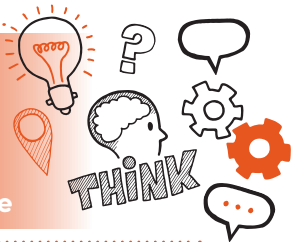


Think about  
Level 5 Early Years  
Lead Practitioner AP01  
Professional discussion  
underpinned by portfolio of evidence



On the day of this assessment you will carry out:



A 60-minute professional discussion (+10%)



Remote or face-to-face



In a suitable environment under exam conditions



With an end-point assessor



### Key point

You will have already submitted a portfolio of evidence. Your portfolio is not directly assessed but will be used to underpin the professional discussion.



## Do

- Review the criteria associated with the professional discussion – this can be found in the EPA kit
- Ensure a quiet room is available and that there are no interruptions or distractions
- Be prepared to answer a minimum of 6 set questions and any follow-up questions that the assessor may ask
- Refer to your portfolio of evidence to show how you have applied the required knowledge, skills and behaviours to your work practice



## Don't

- Forget to plan
- Forget to bring your ID
- Forget to tell your colleagues that you are being assessed



## Next steps

- Results can take up to 7 working days to be confirmed.
- Your manager/training provider will inform you of the results.



## Resits

- If you do not achieve a pass result on the professional discussion, you can resit the assessment.



## Use the following table to plan and prepare for the professional discussion

Assessment elements	Key points to remember
Effective implementation of legislation and guidance	
Effective promotion of development, health and wellbeing	

Assessment elements	Key points to remember
<b>Continual professional development</b>	
<b>Administrative</b>	

