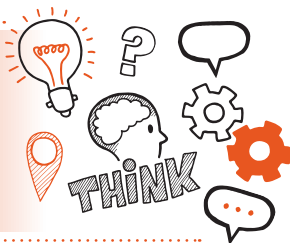


**Think about
Presentation of work-based
project and Q&A
Level 5 Operations/
Departmental Manager**



On the day of assessment, you will carry out:



A 15-minute presentation and 15-minute Q&A



Face to face



Under exam conditions



With an end-point assessor and your line manager (optional)



Key point

You will have already submitted your work-based project.



Do

- Review the criteria associated with the presentation and Q&A - this can be found in the EPA kit
- Ensure a quiet room is available and that there are no interruptions
- Take advantage of the full 15 minutes of the presentation
- Refer to relevant the theories, models and tools considered in your project
- Give clear, in-depth answers to questions that reflect the level 5 standard



Don't

- Forget to plan
- Forget to refer to the detail included in your work-based project
- Forget to check that any equipment required is available and working
- Exceed 15 minutes for your presentation



Next steps

- Results can take up to 12 days to be confirmed
- Your manager will inform you of the results



Resits

- If you do not achieve a pass result on the presentation and Q&A, you can resit the assessment



Notes

A series of horizontal dotted lines for writing notes.

