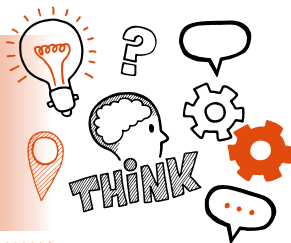


# Think about Practical Assessment Level 2 ST1025 Urban Driver v1.1



On the day of this assessment you will carry out:



**A 2 hour practical assessment consisting of three components.**

1. Practical vehicle journey plan (15 minutes)
2. Practical pre-use checks (40 minutes)
3. Practical driving assessment (1 hour 5 minutes)



**Face-to-face**



**In your natural working environment**



**Part 1 - Assessor must obtain feedback on the route from the manager at the employer site**



## Key point

You will be required to drive a vehicle on a real road network to a final destination which will be a simulated site, chosen by Highfield.



## Do

- ☐ Review the criteria associated with the practical assessment – this can be found in the EPA kit
- ☐ Ensure you have a category C/C1 vehicle and route planning equipment and resources available
- ☐ Take into account the most efficient routes, vehicle type and limitations, road features and use of navigation equipment in your planning
- ☐ Complete vehicle checks in line with the Driver and Vehicle Standards Agency (DVSA) guidelines and remember to check the fuel gauge/charge level, the cab condition and identify any defects
- ☐ Remember to risk assess the destination and park the vehicle safely
- ☐ Be prepared to answer at least 5 questions relating to driving safely and professionally, using IT and equipment and risk assessment



## Don't

- ☐ Forget to plan
- ☐ Forget to bring your ID
- ☐ Forget to include a range of road types in your journey plan



### Next steps

- Results can take up to 7 working days to be confirmed
- Your manager/training provider will inform you of the results



### Resits

- If you do not achieve a pass result on the practical assessment you can resit the assessment



## Use the table below to plan and prepare for the practical assessment.

**(P)** indicates pass criteria

**(D)** indicates distinction criteria

Assessment criteria	Key points to remember
<b>Vehicle Preparation</b>	
(P) Prepare a fixed axle vehicle over 3500 KG for use, by performing general inspection around the vehicle, checking the cab set up, and fluid levels	

<p>(P) Identify defects that could impact on the planned journey, in accordance with DVSA and employer guidelines. Escalate any concerns in-line with organisational procedures</p>	
<p>(P) Take responsibility, by ensuring the vehicle has enough fuel and/or electric charge to meet planned journey requirements. Complete vehicle preparation tasks independently and within limits of authority</p>	
<b>Route Planning</b>	
<p>(P) Plan an economical route for the journey that is likely to meet the timescale requirements as per the contract (or equivalent agreement)</p>	
<p>(P) Factor in any known events impacting the road network, including roadworks and congestion</p>	
<p>(D) Justify your decision on either timescale or economic grounds</p>	

## Drive Safely & Professionally

(P) Safely handle a fixed axle vehicle over 3500kg, when driving both on public roads and driving on-site, for example, a builder's yard or a depot

(P) Take account of the vehicle's physical capability and limitations and adjust your driving and parking to complete the job safely

(P) Consider and respond to potential risks posed by other both pedestrians and vulnerable road users (for example cyclists), adjusting your driving to suit

(P) Consider the environments you drive in, including driving conditions and weather conditions and adjust your driving to complete the job safely

(P) Adhere to parking restrictions in the local area

(D) Explain the consequences of a given scenario, as selected by the independent assessor, outlining the danger to individuals or the impact on the vehicle

### Use of Equipment & IT

(P) Use the available in-cab electronic systems, following both the operating procedures for that equipment, and the highway code requirements for safe driving

### Risk Assessment

(P) Complete a dynamic risk assessment of a site by considering all factors that present possible risk to the safety of any person or the vehicle and the on-site environment

(P) Take any remedial action required, by responding in a way that reduces risk. (e.g., adjusting delivery, aborting, reporting or escalating)

(D) Explain how you considered all factors to make a risk judgement