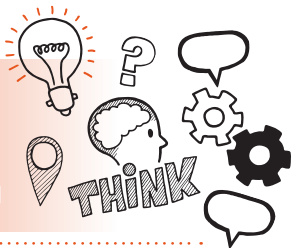


Think about
Professional dialogue and interview
Level 3 Supply Chain Practitioner
(Fast-moving consumer goods) AP01



On the day of assessment, you will carry out:



A 30-45-minute professional dialogue and interview



Remote or face-to-face



Under exam conditions



With an end-point assessor and line manager (optional)



Key point

Your line manager may be present to support you and confirm information but is not able to take part in the dialogue and interview.



Do

- Review the criteria associated with the professional dialogue and interview - this can be found in the EPA-kit
- Review relevant legislation, regulations and your organisation's policies and procedures
- Bring examples of your on-programme work to refer to and showcase your skills and behaviours
- Be prepared to answer structured open questions
- Be prepared to reflect on your on-programme experiences and learning



Don't

- Forget to plan
- Forget to reflect on your personal development
- Forget to bring your ID



Next steps

- Results can take up to 12 working days to be confirmed
- Your manager/training provider will inform you of the results



Resits

- If you do not achieve a pass result on the professional dialogue and interview you can resit the assessment. The highest grade you can achieve overall for a resit is a pass

