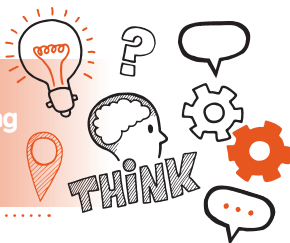


Think about
Simulated observation and questioning
Level 2 Pharmacy Services Assistant
AP01



On the day of assessment, you will carry out:



2 30-minute simulated observations and Q&A



Face-to-face



In your workplace



With an end-point assessor



Key point

You will need to ensure that you have a stock order ready to check in and that a final accuracy checker is available.



Do

- Review the criteria associated with the observation - this can be found in the EPA-kit
- Use the planner to plan how you will demonstrate the skills you have that are associated with the simulated observation
- Be prepared to demonstrate your practice on a 'dummy' patient
- Be prepared to answer questions that your end-point assessor may have
- Make sure you use the time allocated to you for reading the information provided prior to starting each task



Don't

- Forget to plan
- Forget to tell your colleagues and other relevant people that you are being observed
- Forget to bring your ID



Next steps

- Results can take up to 12 working days to be confirmed
- Your manager/training provider will inform you of the results



Resits

- If you do not achieve a pass result on the simulated observation you can resit the assessment



Use the table below to plan and prepare for the simulated observation

Standard area	Key points to remember
Dispensing and supply of medicines and medicinal products	

Team Work

**Communication,
pharmacy law
and ethics**