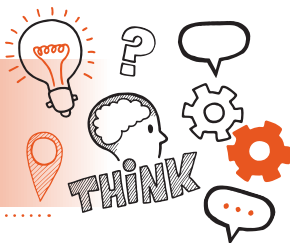


Think about
Work Project and Associated Presentation
with Q&A Level 3 Safety, Health and
Environment (SHE) Technician AP02



On the day of assessment, you will carry out:



A 20-minute presentation and a 15-minute Q&A session based on your work project



Remote or face-to-face



Under exam conditions



With an end-point assessor



Key point

You will have already submitted your work project report that covers the required criteria for the work project in advance of your presentation. Your presentation and answers to questions **MUST** relate to your work project.



Do

- ☐ Review the criteria associated with the work project and associated presentation – this can be found in the EPA kit
- ☐ Remember that if you include audio evidence in your presentation, this must not exceed 2 minutes (10%) of the time allocated
- ☐ Make sure you have a quiet room available where you will not be disturbed
- ☐ Ensure that you bring your project report and presentation resources with you to the interview
- ☐ Be prepared to answer open questions and relate your all of your responses to the work project you have undertaken



Don't

- ☐ Forget to plan
- ☐ Forget to refer to the evidence provided in your work project to demonstrate your knowledge in practice, skills and behaviours
- ☐ Forget to refer to equality, diversity and inclusion
- ☐ Forget to bring your ID



Next steps

- Results can take up to **7** days to be confirmed
- Your manager/training provider will inform you of the results.



Resits

- If you do not achieve a pass result on the work project and associated presentation you can resit the assessment.



Use the table below and your work project report to plan and prepare for the associated presentation with Q&A.

Standard area	Key points to remember
Code of conduct for good SHE working practices	
SHE management systems	

**Risk
assessments**

**Communication
and
presentation**

**Work
instructions and
implementation**