



MILITARY

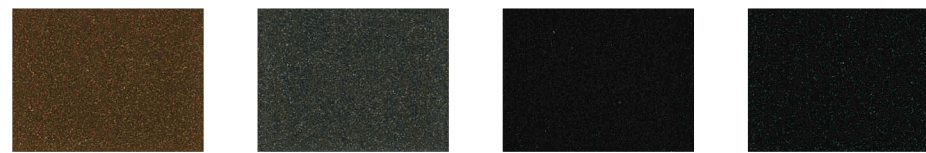


MLP80000 10-30 Low-Gloss White Primer (595-26622) Epoxy
 MLP20001 30-40 Low-Gloss Beige (595-26586) TGIC-Free Polyester UD
 MLP20000 2-5 Desert Tan (595-33446) Urethane
 MLP70001 15-30 Gray Primer (595-6307) Epoxy



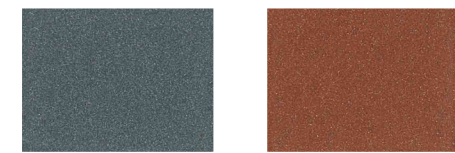
MLP40000 2-5 Forest Green (595-4079) Urethane
 MLP40001 10 383 Camo Green (595-34094) Urethane
 MLP50001 85+ Air Force Blue (N5804EA) TGIC Polyester

SPECIALTY TEXTURE

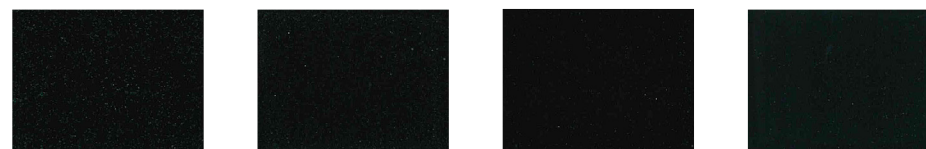


PCT25103 2-5 Cognac Metallic Texture XMR, BD
 PCTZ29122 2-4 Satin Bronze Texture
 PCTT90105 4.5-10.5 RAL 9005 Jet Black
 PCTT90140 6-10 Black Asphalt

SPECIALTY CRINKLE

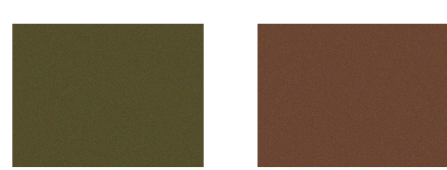


PCTT70153 2-4 Gray Crinkle
 PCTT33100 0-4 Copper Crinkle

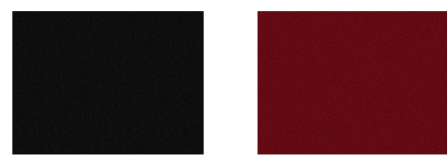


PCU90180M 2-4 Black Texture
 PCTT90112 0-3 Black Texture
 PCTT90190 0-10 Black Texture
 PCTT99124 1.5-2.5 Black Texture UD
 PCTT90131 1.5-3 Black Crinkle

SPECIALTY TRANSPARENT



PCTT30111 85-95 Brass Transparent
 PCTT60111 90-110 Copper Transparent



PCTT90122 90-100 Black Transparent
 PCTT60110 90-110 Red Transparent

LEGEND

Color Code/Name
 The first three letters designate the resin. See below for nomenclature.

Gloss
 Product gloss range is specified with a 60° angle measurement value unless otherwise noted.

PCSZ29109 25-35 UD Bronze

- Exterior or Interior Resins**
- PCA Acrylic
 - PCH Silicone
 - PCS Polyester TGIC-Free
 - PCT Polyester TGIC
 - PCU Polyester Urethane
- Additional Product Classifications**
- Measured on a 20° angle
 - BD Bonded Metallic
 - BL Blended Metallic
 - XMR Extra Mar Resistance
 - UD Ultra-Durable

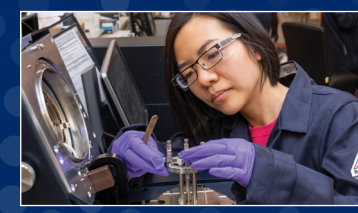
- Interior-Only Resins**
- PCF Polyester/Epoxy Hybrid
 - PCM Epoxy or Epoxy Low-Cure
- The color chips on this card cannot be considered totally accurate color matches, and are not to be used as approved standards.



RAL colors
 Our RAL colors feature standard and ultra-durable TGIC polyester resin technology with excellent weathering, flexibility and hardness. We have over 250 colors in the program, with many in stock and available for next day shipping



Commitment to sustainability
 We have long been committed to making products that minimize impact on the environment. Our powder coatings are formulated without solvents that release VOCs.



Leaders in technical expertise
 We combine our innovative technologies with expert service and customer-tested results, ensuring your operation is receiving the best support possible from PPG.

Specialized powder technologies

PPG also offers a wide range of specialty technologies that meet a variety of other needs.

Specialized Technologies	
Metallic Effects	Our bonded and blended metallic powders offer outstanding consistency and performance in a broad variety of colors.
Low-Cure Powder Coatings	Low-cure powder bakes at lower temperatures and cures more quickly than standard powder, which may help reduce production costs by 15-30% while also increasing throughput.
Architectural Powder Coatings	We offer architectural powder coatings formulated to meet FGIA/AAMA 2603, 2604 and 2605 performance specifications.
Anti-Microbial-Protected Powder Coatings*	Used for food processing, hospitals and fitness equipment surfaces, anti-microbial components in the powder's chemistry protect the coating against the growth of bacteria, viruses, fungi and algae.
Extreme Protection	Whether you need extreme protection from abrasion, corrosion or high temperatures, we've formulated a series of powder coating technologies that can help maximize protection.

*Anti-microbial is limited to the treated surface and does not protect against disease-causing bacteria. The use of these products does not protect users of any such treated article or others against food-borne or disease-causing bacteria, viruses, germs or other disease-causing organisms.



Order online at powdercoatings.ppg.com

WARNING: Certain colors of this product may contain chemicals known to the State of California to cause cancer and/or reproductive harm. For more information go to P65Warnings.ca.gov. This document contains general information only and should not be construed as creating any warranties, express or implied. Please contact a PPG representative for additional information.

The PPG logo, We protect and beautify the world, Envirocron and Envircryl are registered trademarks and Versolon is a trademark of PPG Industries Ohio, Inc. The Facebook "f" Logo is a registered trademark of Facebook, Inc. The Instagram Glyph is a registered trademark of Instagram, LLC. ©2023 PPG Industries, Inc. All rights reserved. 02/23 VERSCT02

PPG Commercial Coatings • 19699 Progress Drive, Strongsville, OH 44149 • 1.800.647.6050 • ppgversolon.com

We protect and beautify the world™

World-class powder coatings solutions



Preferred Powders

Representing the most in-demand colors from our powder coatings library

PPG VERSOLON™ solutions products for powder coaters

With over 140 years of experience protecting and beautifying assets around the world, PPG is a globally trusted supplier of coatings for everything from homes and automobiles to beverage cans, buildings and bridges. Our PPG Versolon solutions family of coatings, sundries and allied products offers light industrial manufacturers a complete universe of capabilities and technologies in one place.

As part of the Versolon solutions family, our PPG ENVIROCRON® and PPG ENVIRACRYL® powder coatings cover five major technologies, each with distinct strengths and different uses. The chart below highlights the comparative characteristics of each technology and shows an average performance rating of the various resin systems relative to the other four major technologies.

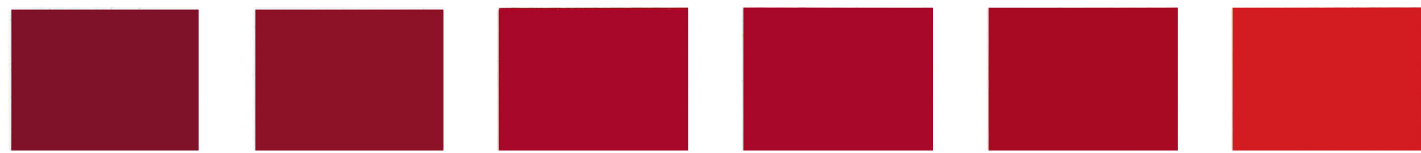
Ask your sales representative for additional assistance with the powder coating selection process.

	Envirocron				Envircryl
	Epoxy	Polyester / Epoxy Hybrid	Polyester	Polyester Urethane	Acrylic
	INTERIOR		EXTERIOR		
	Excellent chemical and mechanical properties with outstanding corrosion protection	Improved corner and recessed area coverage with less sensitivity to overbake than epoxy	Outstanding physical properties that enable prolonged periods of outdoor exposure	Excellent chip, mar and scuff resistance with thin-film properties and high weatherability	Outstanding weather resistance with very smooth, high-gloss color
Weatherability	★	★	★★★★★	★★★★★	★★★★★
Corrosion Resistance	★★★★★	★★★★	★★★★	★★★★	★★
Chemical Resistance	★★★★★	★★★	★★★★	★★★	★★★★
Heat Resistance	★★★★	★★★★	★★★★	★★★★	★★★
Impact Resistance	★★★★★	★★★★★	★★★★★	★★★	★★
Hardness	★★★★★	★★★★	★★★★	★★★	★★★
Flexibility	★★★★★	★★★★★	★★★★★	★★★	★★
Adhesion	★★★★★	★★★★★	★★★★★	★★★★	★★★★

The performance properties of the powder coating may vary based on actual product formulations, application characteristics and operating conditions. PPG offers no implied warranty with respect to the above chart.



POLYESTER TGIC



PCT69106 80+ AG Red UD, PCTT69118 90+ Super Wet Red UD, PCTT60123 85+ Red Baron, PCT69118 85-100 MF Red UD, PCTT60166 85+ RAL 3020 Traffic Red, PCTT30116 75-85 U-H Orange



PCT30166 80+ F9H AG Yellow UD, PCTT30150 80-90 OSHA Safety Yellow, PCTZ30143 85+ Safety Yellow, PCTT30151 80-90 OSHA Safety Orange, PCTZ39137 90+ JLG Orange UD, PCTT39201 90+ Kubota Orange UD



PCTT30104 85-95 Yellow Ribbon, PCT39100 88+ Bright Yellow UD, PCTT30128 90-100 Buttercup, PCT39133 80+ F9LA Industrial Yellow UD, PCTZ39104 80+ CAT Yellow UD, PCT29108 90+ JLG Cream UD



PCT49109 80-90 Onan Green UD, PCT49117 90+ Sunbelt Green UD, PCT40100C 80+ JDM F9A Green UD, PCT40143 85-95 Evergreen, PCTA49128 80+ RAL 6028 Pine Green UD, PCTT50129 85+ P.O. Blue



PCTA59123 80+ RAL 5024 Pastel Blue UD, PCTA59115 80+ RAL 5015 Sky Blue UD, PCTT50130 85-95 Banner Blue, PCTT50186 80-90 OSHA Safety Blue, PCT59100 90+ New Blue UD, PCTA59106 80+ Signal Blue UD

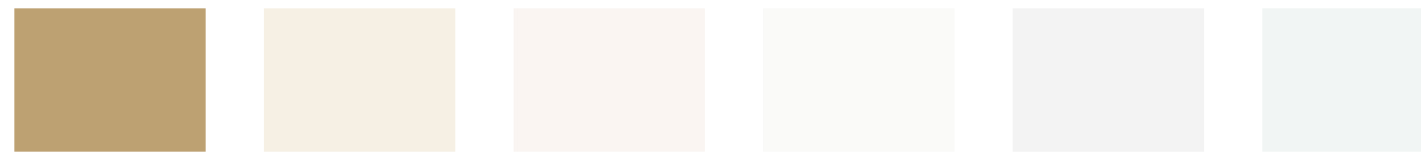


PCTT70107 85+ RAL 7035 Light Grey, PCT70158 55-65 ASA 70 Gray, PCTT79130 85+ Dark Gray Primer UD, PCT70157 55-65 ANSI 61 Gray, PCT70127 53-63 ANSI 49 Gray, PCTA79109 80+ RAL 7016 Anthracite Grey UD

POLYESTER TGIC



PCTT80139 90-100 Sky White, PCT80211 88+ HG White, PCT89104 10-20 White Texture UD, PCT80271 80-100 Sky White XMR, PCTA89264 25-35 RAL 9003 Signal White Matte UD, PCTT80169 45-55 White



PCTT20170 85+ Caramel, PCTT80153 85-95 RAL 1013 Oyster White, PCTT80108 85-95 RAL 9010 Pure White, PCTA89105 90+ RAL 9010 Pure White UD, PCTT89102 90+ Super Wet White UD, PCT80209 75-90 HG White



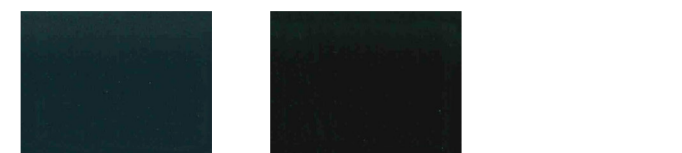
PCTA29126 80+ RAL 8019 Grey Brown UD, PCTT20167 45-55 Bronze, PCTZ29129 40-50 Southern Bronze, PCT90236 20-30 F9T Dull Black, PCTT90109 15-25 Softened Black, PCT99104 40-50 MS-45 Black UD



PCT90126 50-60 F9TR MG Black, PCT99125 55-65 60 Black UD, PCT99136 60-70 SG Black UD, PCT90111M 55-70 Black, PCTT90104 85-95 RAL 9005 Jet Black, PCT99101 90+ Dark Gray UD



PCT90128 90+ Black, PCTT99115 90-100 RAL 9005 Super Wet Black UD, PCT90235 80-85 Black XMR



PCT79129 80+ F9TC Industrial Charcoal JDM UD, PCT79105 80+ CE Gray UD



POLYESTER EPOXY HYBRID



PCF30124 50-70 CAT Yellow Primer, PCF70272 50-70 John Deere Gray Primer



PCF790133 35-45 Black Jack

POLYESTER URETHANE



PCU80164 50-75 White, PCU60138 65-75 Red XMR



PCU99101 27-33 Gloss Black UD, PCU90207 90-100 Black Frame

EPOXY



PCMT80112 6-12 Matte White, PCMT70104 2-5 Gray Primer, PCMT70140 55-70 Zinc Primer Gray, PCMT70101 0-10 Ultra Primer



PCM90144 2-6 Low-Gloss Black, PCMT90101 3-5 Matte Black Vista, PCMT90133 79-91 Black, PCMT90133L 80+ Low-Cure Black

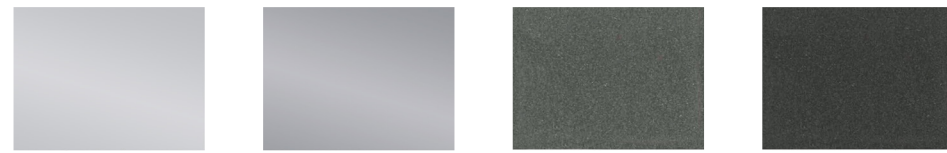


WHEEL



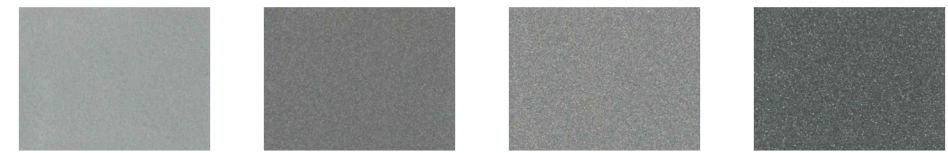
PCST89117 85+ HTE Wheel White, PCST89138 85+ HTE MAX Wheel White, PCST69115 85+ HTE MAX Wheel Red, PCH90101 3-9 Hi-Temp Black Texture

CLEAR

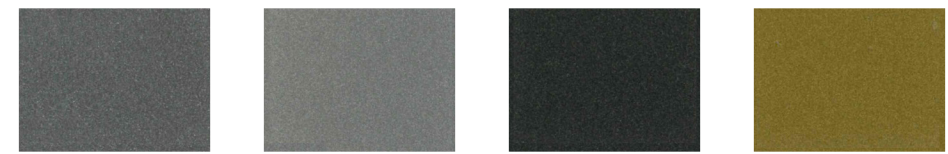


PCU19101 95+ Clear UD, PCTT19102 95+ Clear UD, PCAT19101 5-10 Clear Matte UD, PCT10107 95+ Low-Cure TGIC Clear

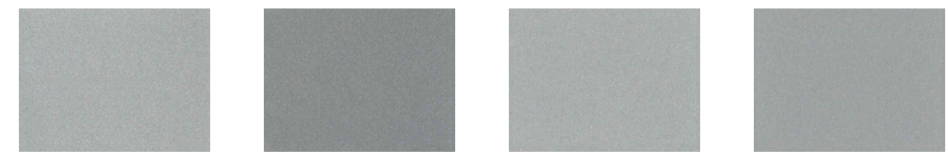
SPECIALTY METALLIC



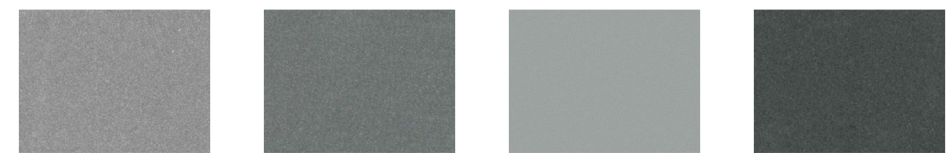
PCTT75157 60-70 Fine Metallic UD, BD, PCUK75103 50-70 Universal Silver UD, XMR, BD, PCT75123 65-75 Silver Mist BD, PCTT75122 70-80 Coarse Metallic BD



PCTK75103 17-23 Graphite Metallic Texture BD, PCUK75105 25-35 GO5 Metallic UD, BD, PCT25101 10-20 Bronze Metallic, PCUT33100 85-95 Sun Gold



PCU75128 55-65 Arctic Silver XMR, BD, PCT75119 40-70 Standard Silver BD, PCTA75107 80 RAL 9006 Silver UD, BD, PCMT75101 30-40 Anodized Aluminum BD

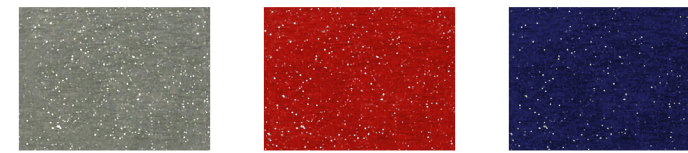


PCT73106 60-85 MS19 Silver BL, PCTT75124 55-65 Bonded Silver Sparkle BD, PCTT73129 85+ Silver Metallic, PCU75139 110-160 Chrome Shadow BD, UD



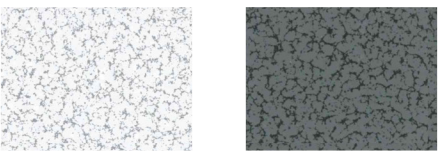
PCFT75105 85-95 Bonded Chrome BD, PCTT75100 90+ Xtreme Chrome UD, BD, PCT75117 100+ Mirror Silver BD, PCUT75120 100+ Pure Chrome Maxx OB BD

SPECIALTY STARLIGHT

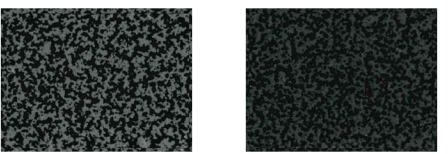


PCTT15100 85-95 Starlight Clear, PCTT65103 90-100 Red Starlight, PCTT55101 85-95 Purple Starlight

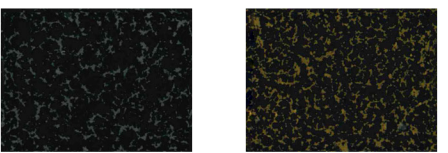
SPECIALTY STRUCTURES



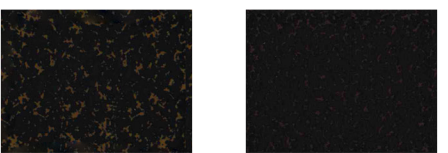
PCTT73124 30-40 White Silver Vein, PCTT73103 85-95 Silver Hammetone



PCMT75103 85-95 Bonded Silver Vein BD, PCTT95100 13-23 Silver Vein



PCSP93102 Silver Vein, PCTT93101 85-95 Antique Gold Vein



PCSP93101 Gold Vein, PCTT23100 85-95 Antique Copper Vein

SPECIALTY CRACKED ICE



PCTT80159 2-8 Ivory Cracked Ice, PCTT90100 0-2 Black Cracked Ice