

# WORD SEARCH

Can you crack the mystery and find all of the words?

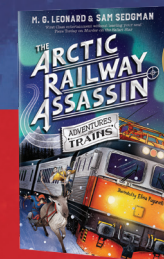
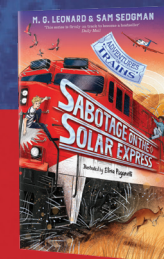
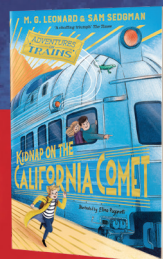


Trains  
Thief  
Mystery

Detective  
Royalty  
Suspect

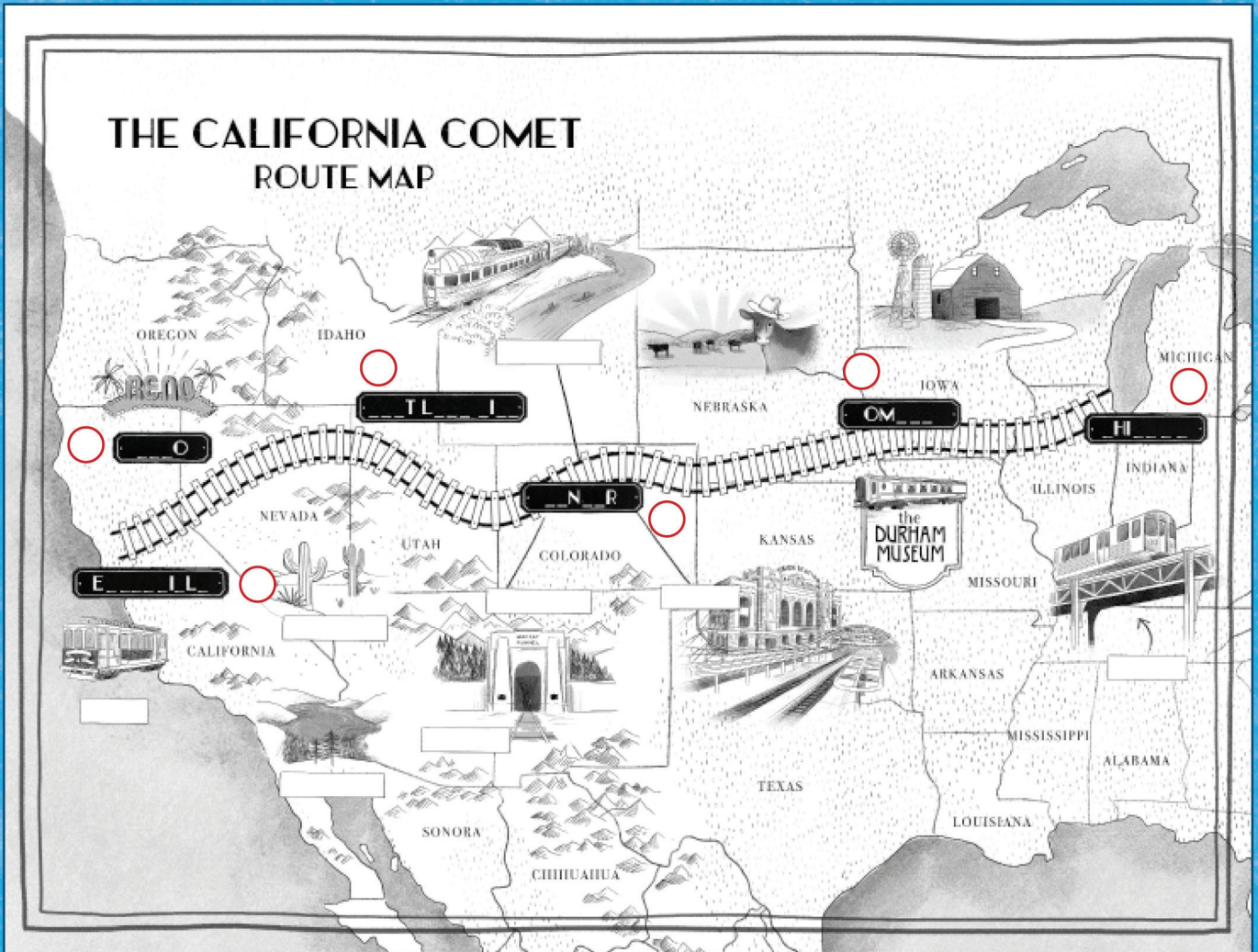
Compartment  
Engine  
Passengers

Luggage  
Diamond  
Hidden



NEW

Uh-oh you have boarded the train but vital information is missing from the map! Can you work out which word goes where before the train departs and help the driver find his way?

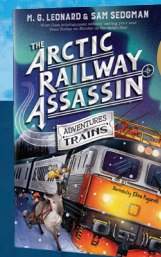


Write the number of the word in the red circle beside the station names.

- ① CHICAGO
- ② DENVER
- ③ OMAHA
- ④ SALT LAKE CITY
- ⑤ EMERYVILLE
- ⑥ RENO

Write the missing place name or location in the corresponding box above.

- THE L TRAM
- CABLE CAR
- DONNER LAKE
- UNION STATION
- MOFFAT TUNNEL
- COLORADO RIVER
- NEVADA DESERT
- ROCKY MOUNTAINS



NEW



# DANGER AT DEAD MAN'S PASS

M. G. LEONARD & SAM SEDGMAN

Illustrated by Elisa Paganelli

ALL ABOARD



## CRACK THE CODE

Use the secret message decoder to uncover the answers to the following questions! You'll find out more about the journey to the German mountains taken by Hal and Uncle Nat in *Danger at Dead Man's Pass*.

A	B	C	D	E	F	G	H	I	J	K	L	M	N	O	P	Q	R	S	T	U	V	W	X	Y	Z
U	P	B	R	O	C	K	E	N	M	O <sub>2</sub>	U <sub>2</sub>	N <sub>2</sub>	T	A	I	N <sub>3</sub>	W	I <sub>2</sub>	T <sub>2</sub>	C <sub>2</sub>	H	E <sub>2</sub>	S	F	L

For example: E U U<sub>2</sub> spells Hal

Q1. True or False? The Eurostar is the longest tunnel underneath the sea in he world?

A1: T<sub>2</sub>WC<sub>2</sub>O NT<sub>2</sub>N I<sub>2</sub> 30 N<sub>2</sub>NU<sub>2</sub>O I<sub>2</sub> U<sub>2</sub>ATK

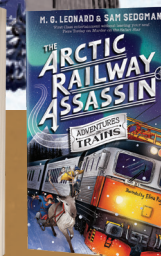
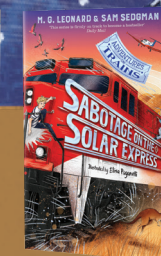
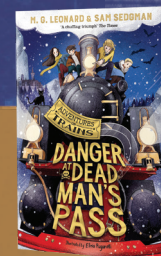
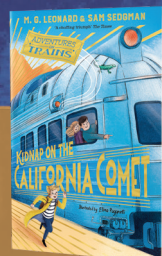
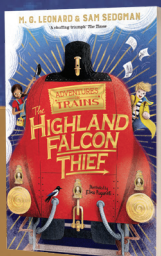
Q2. One of Uncle Nat's favourite German words is wanderlust, what does it mean?

A2: URO I<sub>2</sub>NOT<sub>2</sub>AT<sub>2</sub>WUHO U<sub>2</sub>

Q3. Which city visited by Hal and Uncle Nat on their journey contains the river Spree?

A3: POWU<sub>2</sub>NT

Answers:  
A1. True. It is 30 miles long  
A2. A desire to travel  
A3. Berlin



NEW

**SABOTAGE ON THE  
SOLAR EXPRESS**

M. G. LEONARD & SAM SEDGMAN

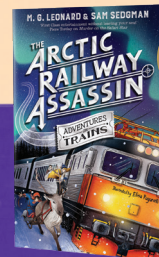
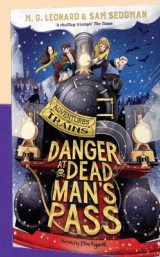
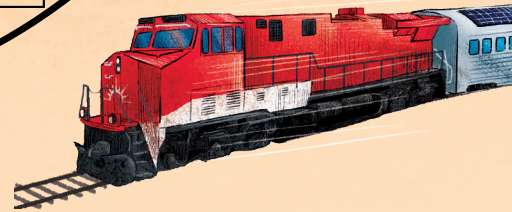
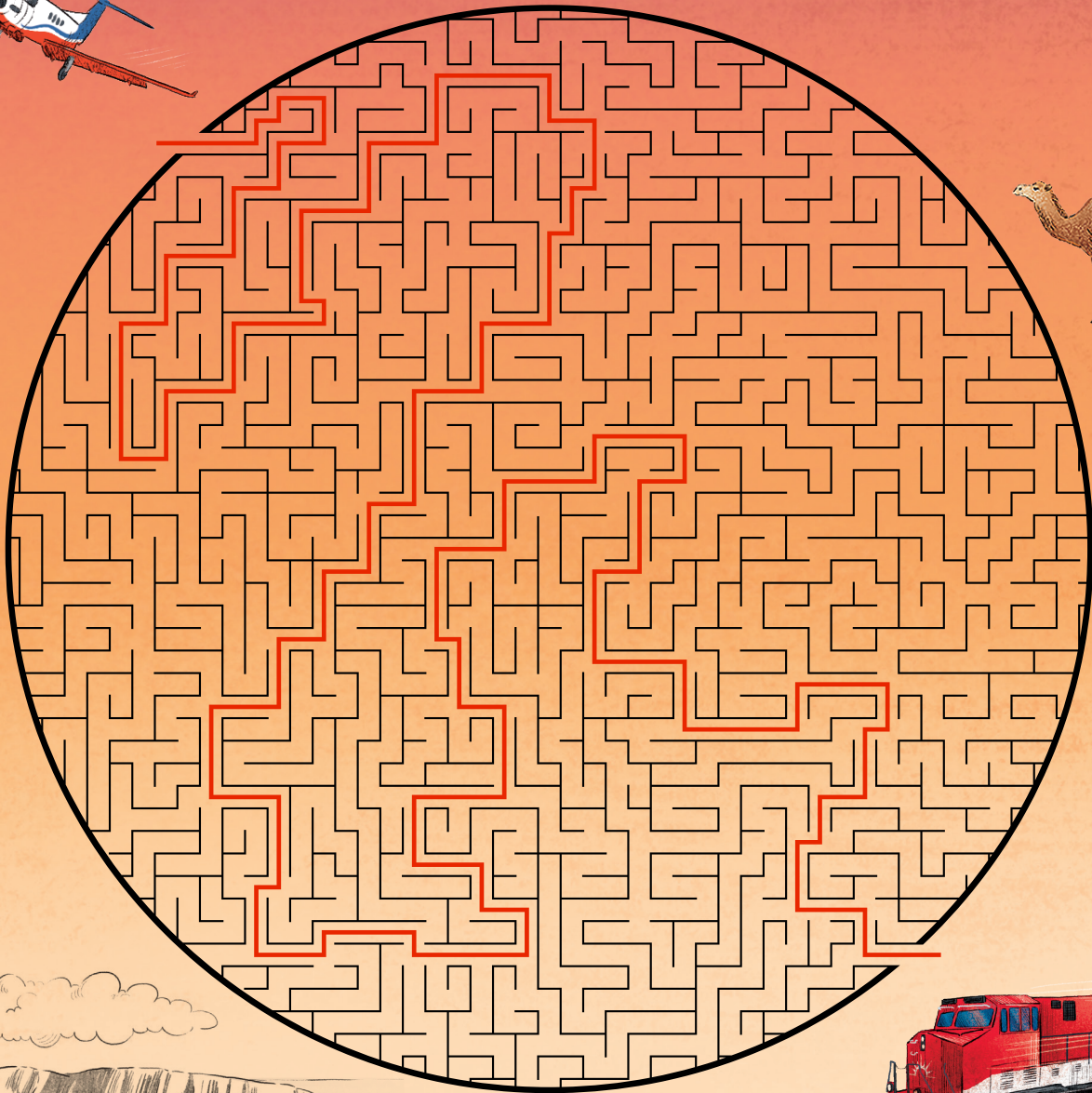
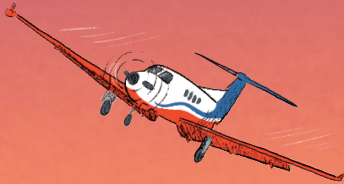
Illustrated by *Elisa Paganelli*

ALL ABOARD

ADVENTURES  
ON  
TRAINS

# MAZE

During the maiden voyage of the Solar Express, Hal and Uncle Nat discover that the train has been sabotaged, hurtling passengers into an action-packed ride across the Australian outback. Can you help Hal to find the saboteur and stop the runaway train before disaster strikes?



NEW

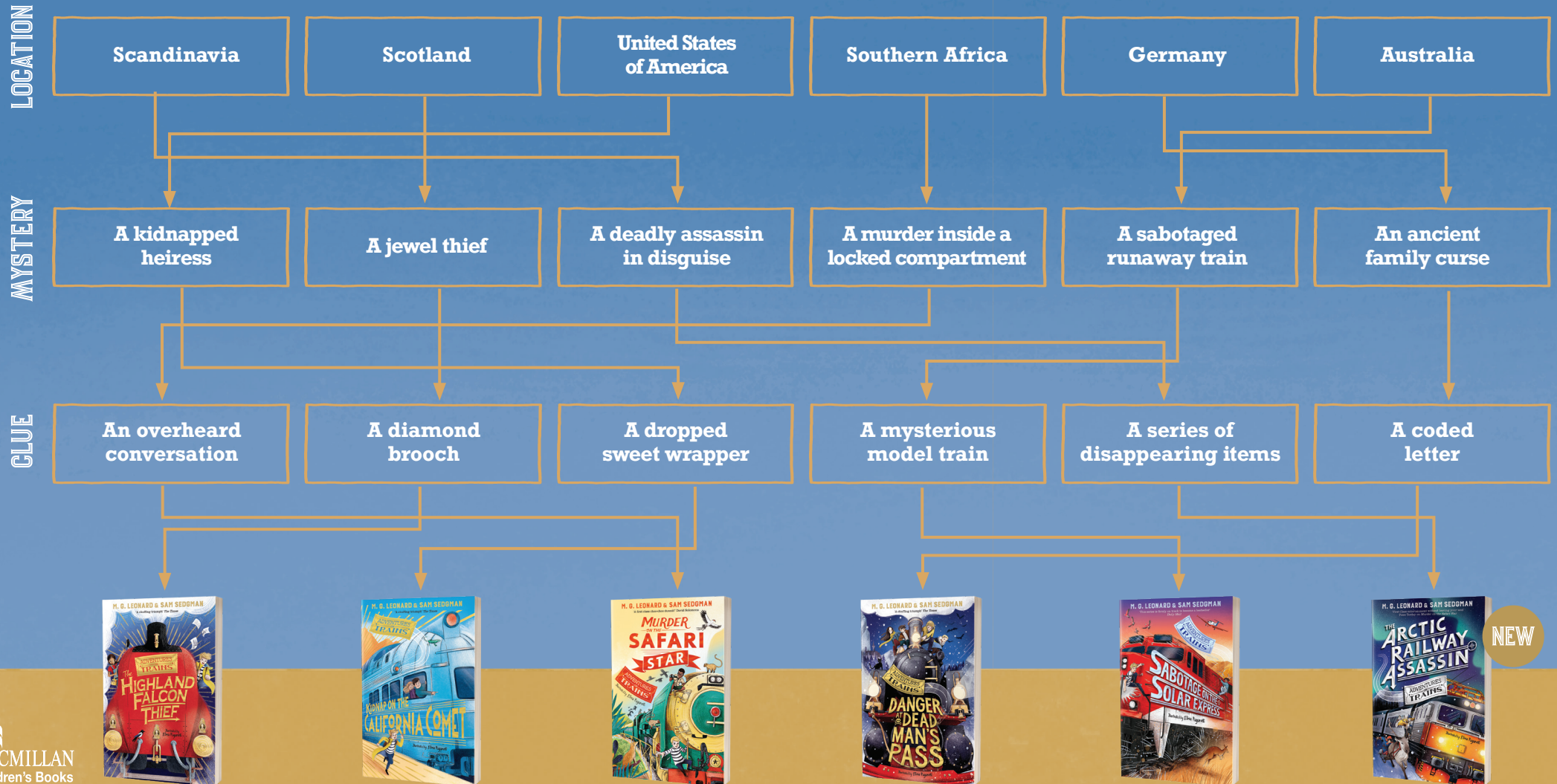
M. G. LEONARD & SAM SEDGMAN

Illustrated by Elisa Paganelli



# CHOOSE YOUR MYSTERY...

Each book in the award-winning Adventures on Trains series sees Harrison Beck embark on an exciting new journey, and with a puzzling new mystery to solve. Join him as he pieces together the clues.



## CREATE YOUR OWN ARCTIC ADVENTURE

In Chapter Four of *The Arctic Railway Assassin*, Hal and Uncle Nat visit a Christmas market in Stockholm, Sweden. Fill in the gaps in the story below to create your own adventure.

Hal and Uncle Nat crossed the bridge and entered a spider's web of medieval streets lined with little shops. As they made their way through the winding lanes, Hal enjoyed the festive windows. Fourteen days till Christmas, Hal thought to himself and smiled. This was going to be the best Christmas ever.

The street widened into a cobbled market square, hemmed in by old buildings painted rust red and blushing orange. Shoppers bustled between rows of red-painted wood cabins with snow-covered roofs strung with evergreen garlands. A huge fir tree sprouted up on one side of the square, decked with lights and dusted with snow. The scents of cinnamon and chocolate tempted Hal forward.

### TOP TIP!

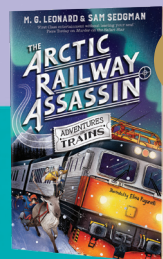
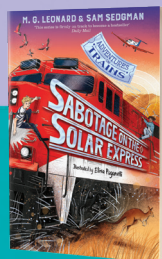
Is anything suspicious happening which Hal and Uncle Nat should be aware of?

### TOP TIP!

How do they interact with the people they encounter?

### TOP TIP!

Think about Hal's surroundings - describe what he might be able to see, hear, smell.



NEW

# THE ARCTIC RAILWAY ASSASSIN

M. G. LEONARD & SAM SEDGMAN

Illustrated by Elisa Paganelli

CREATE YOUR OWN  
ARCTIC ADVENTURE



'Look at these!' Hal exclaimed, going to a cabin displaying beautifully painted wooden horses of all sizes. 'I think Mum would like a red one.' He picked up a wooden horse as big as his hand. 'She can put it on the mantelpiece in her Christmas display.'

While Uncle Nat paid for the horse, and the stall keeper wrapped it in a paper bag, Hal glanced at the next stall, where a woman in blue and red robes was selling carved jewellery made from reindeer antlers. A girl about Hal's age was sitting beside her, also dressed in a blue robe and a red hat. She was playing with the end of one of her long brown plaits and looking bored.

---

---

---

---

---

---

'I don't know about you, but I could do with a hot drink,' Uncle Nat said. 'There's a cafe serving drinks from a hatch over there.'

Hal saw two chalkboard menus on the wall either side of the window. **TAKEAWAY DRINKS – SANDWICHES – SWEETS.**

'Does everyone in Sweden speak English?' Hal wondered as they joined the short queue for drinks.

'Not everyone, but most Swedes know a bit of English.'

Uncle Nat ordered a hot chocolate, a coffee and a couple of cinnamon buns. As he lifted the hot drinks from the waitress in the cafe hatch, a woman in a camel-coloured coat, wearing a leopard-print headscarf and oversized sunglasses, bumped into him. He jumped back to avoid spilling the drinks down his front.

---

---

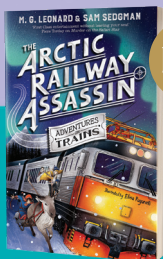
---

---

---

---

**What do you think happens next?  
Find out in *The Arctic Railway Assassin*.**



NEW