

SOUTH CENTRAL HOCKEY NEWS

JULY 2021

South Central Hockey Limited is alive and operating. This is the new company, recently registered at Companies House and the body that will operate, for you, in running and overseeing hockey in our new area. Since England Hockey's AGM and with the input from enthusiastic individuals and co-operation from clubs and counties, huge strides have been accomplished and we continue to work to be ready for the start of the new season in September 2021.

This brief newsletter sets out where we are today, and the activities the band of volunteers continue to work on in readiness for the start of the season. This newsletter will give, we hope, clubs some of the details they strive for and provides anticipated dates for further activities to be completed.

We have scheduled for our inaugural AGM to be held on **22nd July 2021, 7.30pm**. Formal notification will be sent out in due course but please **hold the date**.



Finance

3 weeks into the newly setup role of proposed Finance Director for South Central Hockey, I am very pleased to be doing the role and hopefully providing value and service to South Central Hockey.

We have discussed with England Hockey and all the other areas the principle of how the areas will be financially managed. A rate card has been set for South Central area fees, inline with other regions.

South Central Hockey have started the process to setup a bank account and the company is registered with companies' house with 3 directors.

The areas are going to rely heavily on the Games Management System (GMS) from England Hockey to make the administrative process simpler for clubs and region alike.

Several existing bodies have been identified who may have funds that will be either distributed back to their stakeholders or passed to South Central Hockey as these organisations are wound up.

Game Management System

England Hockey are introducing a new Game Management System (GMS) across the areas which will be integrated with other platforms e.g. OMS, area websites. It will allow us to see all competitions and leagues in real time on one website, there will be a mobile solution (as we know a lot of hockey admin is done pitch side), it will be easy to use, moving team sheets online and eventually removing the paper trail and automate process.

The rollout of GMS will be phased; phase one for the new season is prioritising the user's functionality for members. The system will give much greater flexibility for administering the league; many of the existing systems are clunky and cumbersome.

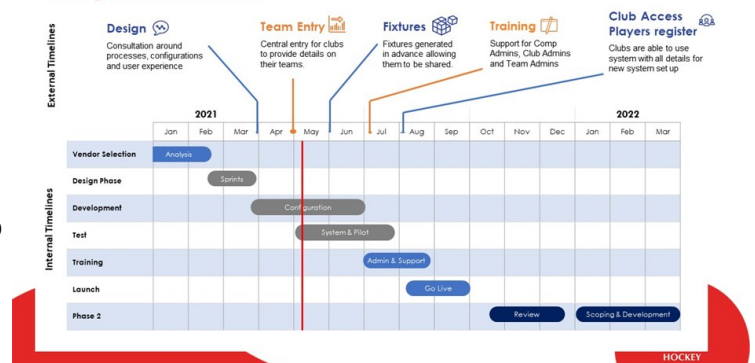
Key dates.

Early July – fixture release

July - Onboarding admin users

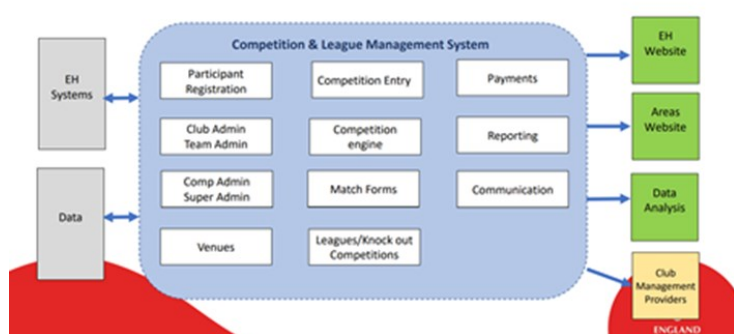
Early August through to September - full launch

Project Timelines



We know some clubs are dependent on hiring 3rd party pitches, so we know it is important to get the fixtures out as soon as possible.

The diagram below shows the core functionality but just to manage expectations, we will need to enter clubs/ organisations and venues on the system along with registration of all participants. Registration will be mandatory with match sheets online for all games. We know that rolling out any new system is always a challenge so there is a comprehensive onboarding plan and we will look to develop local user forums, super users and hold captains meetings ahead of the start of the season. Along with the new Rules & Regulations, which will be graded/ tiered to assist administration, there is a significant amount of change.



The end-outcome of the new technology will be to reduce administration, more automation and improve data. It will provide up to the minute information on all your hockey data needs including reports, forms competition and participate administration etc.

How to get in touch

The team at South Central Hockey are able to support you by answering your questions. Below are our email addresses.

Operations@southcentral.hockey

Stephen Smyth

Finance@southcentral.hockey

James Mitchell

Chair@southcentral.hockey

Jacqui Barlow

Vicechair@southcentral.hockey

Steve Downham

Governance@southcentral.hockey

Frankie Tierney

Please note that “The start-up Directors, together with the other members of the Transition team are standing for election at the AGM as Company Directors and Chairs of the lead committees. Full details of everyone standing has been sent out with the AGM Calling Notice. If you would like to get involved, there is plenty to do and please contact Operations@southcentral.hockey

Social Media

All the main social media sites will be published at the same time as the new website. Facebook, Instagram, Twitter and Linked In. Regular news updates will be published, so what out on your favourite channels



Websites

The England Hockey website is being developed currently to include specific areas for each area. This means that you will be able to navigate to your own area, in our case South Central. Here you will find all the games, reports and information for your area and club in the new season

Governance

The role of Governance is about ensuring that the Board deals with various corporate practice issues properly and as a result the members (the Clubs within South Central) are confident that best practice is being maintained. This includes such things as making sure all the safeguarding; welfare, diversity and data protection systems are in place and being carried out. It also involves representing South Central at National level where areas of governance are involved.

A Key tasks document was prepared by England Hockey for the role of Director of Governance and that can be found on the EH website if you would like to read more about it.

What it does not involve, is the setting of the rules and regulations which will cover the League competitions . As part of the big Restructure; there is to be a single set of rules/regulations which will cover all levels of the playing leagues – with adjustments in some areas as we drop down to the lower levels. An EH Working Party is putting those together and we are all awaiting with interest to see what is eventually published.

Officiating

The South Central Umpiring Transition Team (SCUTT) has been working hard in the background to get ready to hand over to the incoming South Central Area Officiating Committee, and we are planning our first joint meeting as we speak.

We have sent an officiating questionnaire to officials, and clubs, in an attempt to get a better grip on who will be officiating in South Central in the coming season, and at which level. We have also been looking for the same information from our team of assessors and coaches, to ensure that we maximise the development resources available within the newly form South Central Area.

Whilst the structure of leagues and the geographical Area will be different next season, there will be lots which will stay the same, and be familiar to many of you. Whilst appointments will be managed using the Officiating Management System (OMS), which Regional officials will be familiar with, it is very likely that the people doing the appointing will be very much the same as is currently the case.

We plan to have a Lead Appointer, who will be appointing to the Premier divisions and, supporting that Lead role, will be teams of South Central North (mainly Berkshire, Buckinghamshire and Oxfordshire) and SC South (mainly Hampshire) appointers to maximise the knowledge of local clubs and umpires that has been built up over many years of appointing.

We also plan a Lead Developer, again with teams supporting South Central North and South Central South, to ensure that we continue, or even enhance, the development opportunities to officials throughout the South Central Area.

Work is going on within England Hockey to further develop OMS, and also to provide training materials, probably in the form of “How to” videos, so that using the new system doesn’t come as too much of a shock as we move towards the new season. Officials will be able to enter their availability, and also to add notes to help the Appointing team (e.g. if you are also playing you can put those details in, so that the appointers will know where you will be, and what times you will be available).



There are teams looking, nationally, at how officials should be remunerated, and we await further proposals from that work stream. It probably won’t be the same as the current rates but work is going on the make it as fair as possible, without infringing on taxation rules.

There is also work going on considering branding and whether Areas should have their own design of logos, or whether we should be using the standard England Hockey logo. Whilst that work goes on it is clear that we will continue to use our existing officiating kit during the first season, meaning the shirts that we wear, and the radios that we use, will not change, at least for the first year, and possibly well beyond too. The tried and tested method of officials agreeing amongst themselves, during the week before the match, which colour shirts we should wear will still work!

Our plan is for officials, covering umpires, umpire support and development, and technical officials to operate in as close a way to how we do now. There will be some changes, of course, due to the new Area structure, and the changes to the leagues, but we hope to minimise the disruption and to maximise the enjoyment for all of our officiating community.

There is now a new e-mail address for the Chair of the South Central Area Officiating Committee (chair.officiating@southcentral.hockey) so if you have any questions then please get in touch. Other committee roles will have new e-mail addresses in due course. Looking forward to seeing you pitch side at some stage as we move towards to new season.

League Structure

Thank you to all the teams that have registered their team lists online. South Central Adult League committee have completed their review of the populated league structure against team registration and have contacted clubs that had outstanding issues; the league structure has now gone to EH for fixtures to be run. The fixture list will be out in early July.

The proposed start of the Adult League for South Central is 25th September.

We are at version 6 of the League regulations, it is a complicated area, with many (55 sets of rules across the Country) differing views as to how the leagues should be run. Possibly one of the biggest differences from previous years is that Men will have to register and team sheets will be required from both genders for all adult league matches.

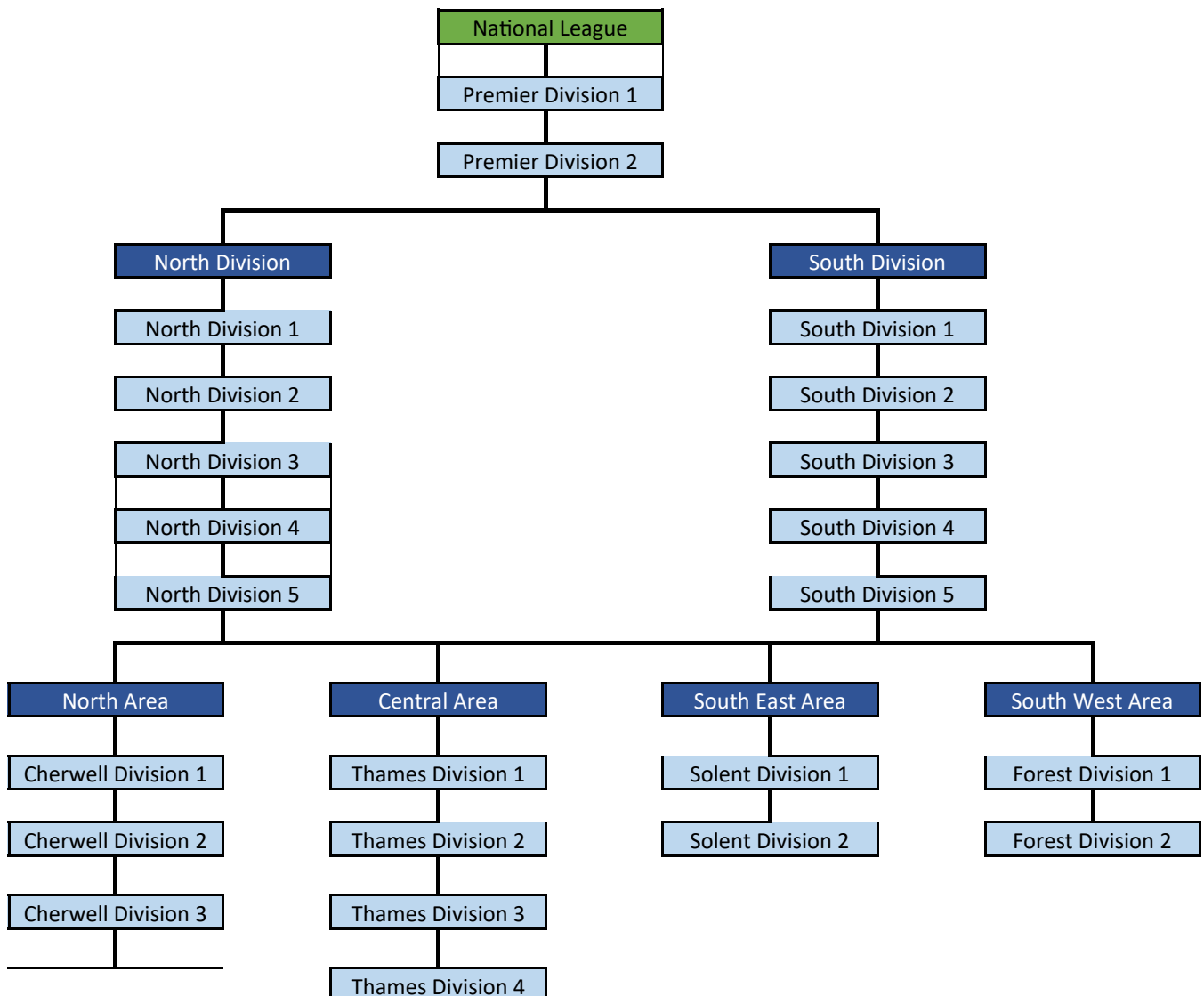
The Competitions Management System (CMS) will be renamed GMS (Game Management System) this is where clubs and teams will enter all their details. There will be training for club administrators, this will be announced shortly but expected 2nd week of July, it is hoped that clubs will be able to register players a month later.

The Adult League is chaired by Richard Wood (due to be elected at the AGM)

Chair.Adultleagues@southcentral.hockey with a number of volunteers looking after various areas of the league, each division will have an administrator, details will be shared after the South Central AGM. The men's and ladies

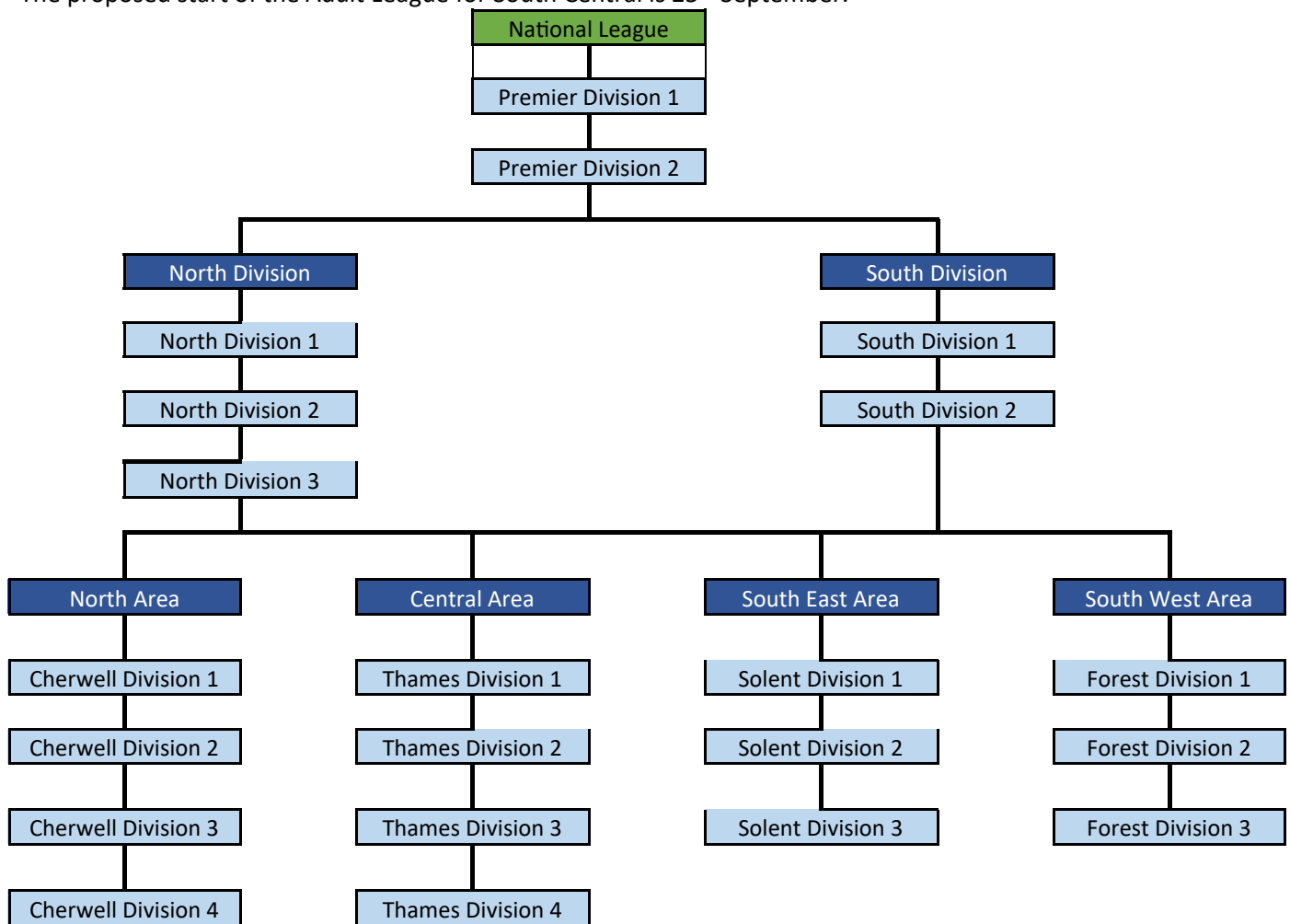
Men's league structure

The proposed start of the Adult League for South Central is 25th September.



Ladies league structure

The proposed start of the Adult League for South Central is 25th September.



Junior Leagues

Kate Porter is the Chair of the Junior Leagues (due to be elected at the AGM) in the South Central area. Having been appointed only a few weeks ago in an interview she says:

‘ We have just appointed 2 administrators for the area - Heather Windust who will cover Hampshire U8-U18 and also all South Central junior activity from U12-U18 and Mark Stuart-Thompson who will cover all Bucks Berks and Oxon junior activity from U8-U18. Their email addresses are ‘

sc.juniorleagues@southcentral.hockey - Heather

Bbo.juniorleagues@southcentral.hockey - Mark



They have been working hard to check the entries that have been submitted from all junior clubs. If you don't think you have submitted anything yet please get in touch with them. We do need you to give us an indication of how many teams you have in each age group and which level you wish to enter at the older age group. We would like to be as flexible as possible with teams who end up playing at the wrong level and we ask that you work with us in this period of extreme change. We aim to provide junior hockey at all levels from those wanting to play at the highest level tier 1 to those who want to compete at a development participation level. We also hope to arrange fixtures in a way that minimises travel for the participation level which could mean that you play matches across county borders but still don't travel as far as you might if matches were organised within the county. We are aiming to be ready to upload club details and fixtures as soon as the Game Management System provided by England Hockey is ready. This will be by the end of July.

Timeline

Now—let us know the number of teams you have in each age group and the level you expect they will play at as soon as you can

July— fixtures created into Game Management System

I'm sure you all will agree that a lot of work is going on this summer in preparation for the new season ahead.

- The launch of the new areas across the nation, leagues and digital footprint.
- Game Management system,
- Area websites
- New companies

If you look up Companies house you can see South Central Hockey is now listed.

Company number 13433394

The screenshot shows the Companies House profile for South Central Hockey Limited. At the top, there is a search bar with the text "Search for a company or officer" and a magnifying glass icon. Below this, the company name "SOUTH CENTRAL HOCKEY LIMITED" is displayed in large, bold, black letters. Underneath the name, the company number "13433394" is shown. There are two green buttons: "Follow this company" and "File for this company". Below these buttons are tabs for "Overview", "Filing History", "People", and "More". The "Overview" tab is selected. The main content area is divided into several sections: "Registered office address" (England Hockey Braham Abbey, Braham, Marlow, England, SL7 5BB), "Company status" (Active), "Company type" (Private company limited by guarantee without share capital) and "Incorporated on" (2 June 2021), "Accounts" (First accounts made up to 30 June 2022 due by 2 March 2023) and "Confirmation statement" (First statement date 1 June 2022 due by 15 June 2022), and "Nature of business (SIC)" (9299 - Other sports activities).

STOP PRESS

The big news is that to start the company and the new area South Central Hockey are holding its first AGM on

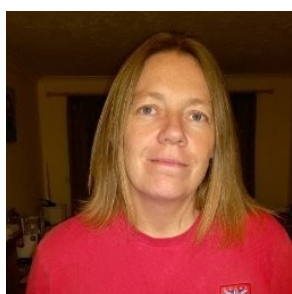
Thursday 22nd July at 7.30pm

Put this date in your diary.

Clubs are required to register for the event and access details will be provided following registration. We will share with you as much information as is available at the time, and any questions that cant be answered on the night will be taken away and responses provided at the earliest opportunity.



Meet the team



Jacqui Barlow



Stephen Downham



Stephen Smyth



James Mitchell



Kate Porter



Simon Milford



Richard Wood



Frankie Tierney