



# NORTH WEST HOCKEY

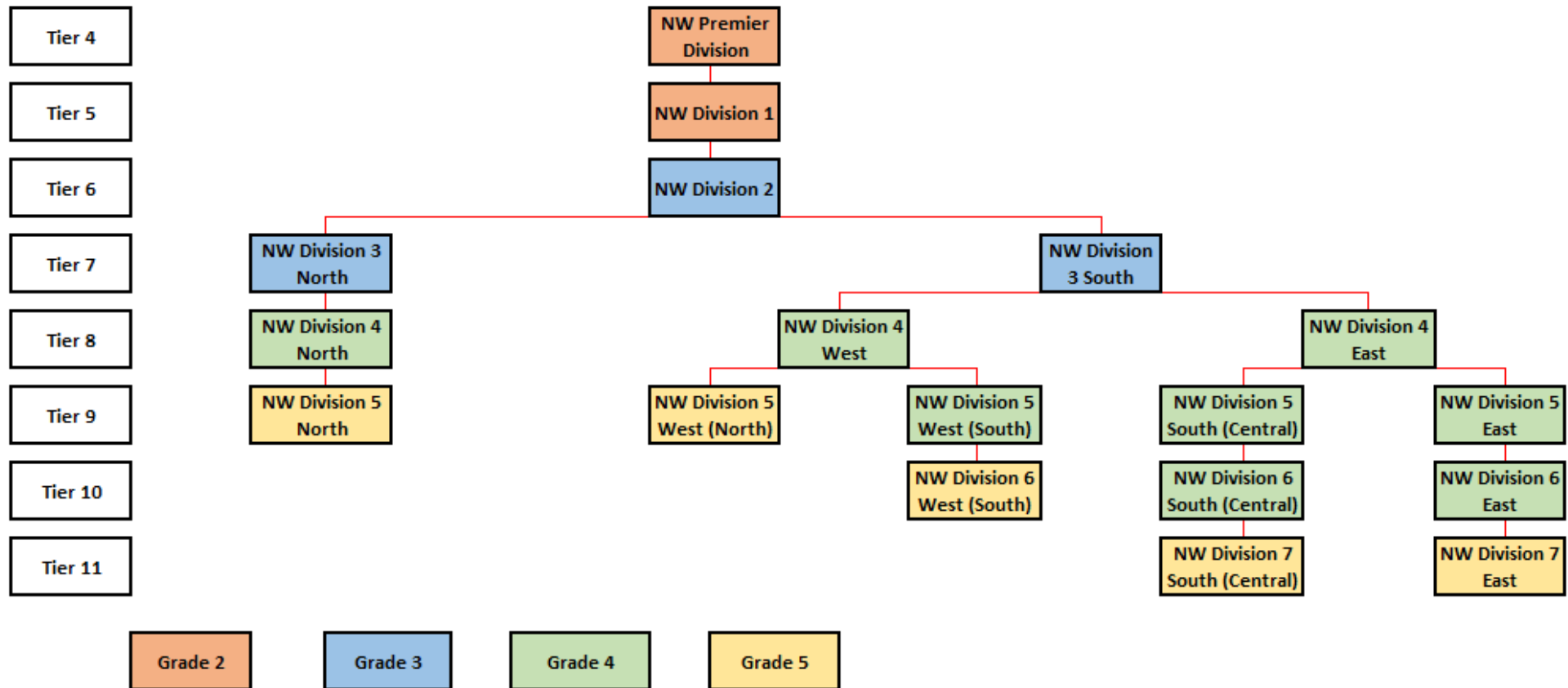
Grade 2

Grade 3

Grade 4

Grade 5

## 2025-2026 Open/Men's Divisions



Division Structure may be adjusted in the 2026-2027 season to accommodate new Clubs and Team entries



# NORTH WEST HOCKEY

Grade 2

Grade 3

Grade 4

Grade 5

## 2025-2026 Open/Men's Divisions

| NW Premier Division |
|---------------------|
| Alderley Edge 1     |
| Bowdon 2            |
| Brooklands MU 2     |
| Chester 1           |
| Crewe Vagrants 1    |
| Deeside Ramblers 2  |
| Didsbury Northern 2 |
| Formby 1            |
| Macclesfield 1      |
| Preston 1           |
| Timperley 2         |
| Windermere 1        |

| NW Division 1                  |
|--------------------------------|
| Bebington 1                    |
| Brooklands MU 3                |
| Chester 2                      |
| City of Manchester 1           |
| Clitheroe Blackburn Northern 1 |
| Eirias 1                       |
| Golborne & Prescott 1          |
| Liverpool Sefton 1             |
| Neston 2                       |
| Preston 2                      |
| Urmston 1                      |
| West Derby 1                   |



# NORTH WEST HOCKEY

Grade 2

Grade 3

Grade 4

Grade 5

## 2025-2026 Open/Men's Divisions

| NW Division 2          |
|------------------------|
| Alderley Edge 2        |
| Bowdon 3               |
| Buxton 1               |
| Keswick 1              |
| Lancaster University 1 |
| Oxton 2                |
| Preston 3              |
| Stockport Bramhall 1   |
| Timperley 3            |
| Triton 1               |
| Wigton 1               |
| Winnington Park 1      |

| NW Division 3 North            |
|--------------------------------|
| Clitheroe Blackburn Northern 2 |
| Garstang 1                     |
| Kendal 1                       |
| Keswick 2                      |
| Kirkby Lonsdale 1              |
| Lancaster & District 1         |
| Leyland & Chorley 1            |
| Lytham St Annes 1              |
| Preston 4                      |
| Preston 5                      |
| Ulverston South Lakes 1        |
| Windermere 2                   |

| NW Division 3 South   |
|-----------------------|
| Chester 3             |
| Crewe Vagrants 2      |
| Didsbury Northern 3   |
| Golborne & Prescott 2 |
| Lymm 1                |
| Mossley Hill 1        |
| Neston 3              |
| Northop Hall 1        |
| Rochdale 1            |
| Southport 1           |
| Wigan 1               |
| Wilmslow 1            |



Grade 2

Grade 3

Grade 4

Grade 5

## 2025-2026 Open/Men's Divisions

| NW Division 4 North                      |
|------------------------------------------|
| Clitheroe Blackburn Northern Development |
| Fylde 1                                  |
| Garstang Development                     |
| Kendal 2                                 |
| Keswick 3                                |
| Lancaster University 2                   |
| Leyland & Chorley 2                      |
| Leyland & Chorley Development            |
| Lytham St Annes 2                        |
| Preston 6                                |
| Preston 7                                |
| Ulverston South Lakes Development        |

| NW Division 4 West  |
|---------------------|
| Bangor City 1       |
| Bangor University 1 |
| Birkenhead 1        |
| Eirias 2            |
| Formby 2            |
| Liverpool Sefton 2  |
| Liverpool Sefton 3  |
| Neston 4            |
| Northern 1          |
| St Helens 1         |
| Warrington 1        |
| West Derby 2        |

| NW Division 4 East   |
|----------------------|
| Alderley Edge 3      |
| Bolton 1             |
| Bowdon 4             |
| Bowdon 5             |
| Brooklands MU 4      |
| Bury 1               |
| City of Manchester 2 |
| Deeside Ramblers 3   |
| Didsbury Northern 4  |
| Sale 1               |
| South Manchester 1   |
| Whitchurch 1         |

| NW Division 5 West (North)   |
|------------------------------|
| Formby 3                     |
| Formby 4                     |
| Golborne & Prescott 3        |
| Liverpool Sefton Development |
| Mossley Hill 2               |
| Mossley Hill 3               |
| Southport 2                  |
| St Helens 2                  |
| University of Liverpool 1    |
| Warrington 2                 |
| West Derby 3                 |
|                              |

| NW Division 5 West (South) |
|----------------------------|
| Bebington 2                |
| Chester 4                  |
| Chester 5                  |
| Denbigh 1                  |
| Eirias 3                   |
| Neston 5                   |
| Northop Hall 2             |
| Oxton 3                    |
| Oxton 4                    |
| Rhyl & District 1          |
| Runcorn 1                  |
| Wrexham Glyndwr 1          |

| NW Division 5 South (Central) |
|-------------------------------|
| Alderley Edge 4               |
| Crewe Vagrants 3              |
| Crewe Vagrants 4              |
| Deeside Ramblers 4            |
| Deeside Ramblers 5            |
| Knutsford 1                   |
| Knutsford 2                   |
| Macclesfield 2                |
| Macclesfield 3                |
| Sandbach 1                    |
| Triton 2                      |
| Winnington Park 2             |

| NW Division 5 East   |
|----------------------|
| Bowdon 6             |
| Bowdon 7             |
| Brooklands MU 5      |
| Buxton 2             |
| City of Manchester 3 |
| Didsbury Northern 5  |
| Didsbury Northern 6  |
| Horwich 1            |
| Stockport Bramhall 2 |
| Timperley 4          |
| Timperley 5          |
| Timperley 6          |



# NORTH WEST HOCKEY

Grade 2

Grade 3

Grade 4

Grade 5

## 2025-2026 Open/Men's Divisions

| NW Division 6 West (South)  |
|-----------------------------|
| Bebington 3                 |
| Chester 6                   |
| Denbigh 2                   |
| Eirias Development          |
| Neston 6                    |
| Northop Hall 3              |
| Oxton Development           |
| Runcorn 2                   |
| Wrexham Glyndwr Development |
|                             |
|                             |
|                             |

| NW Division 6 South (Central) |
|-------------------------------|
| Alderley Edge 5               |
| Deeside Ramblers 6            |
| Deeside Ramblers 7            |
| Macclesfield 4                |
| Northern 2                    |
| Sandbach 2                    |
| Triton 3                      |
| Whitchurch 2                  |
| Wilmslow 2                    |
| Winnington Park 3             |
|                               |
|                               |

| NW Division 6 East  |
|---------------------|
| Bolton 2            |
| Bolton 3            |
| Brooklands MU 6     |
| Bury 2              |
| Buxton 3            |
| Didsbury Northern 7 |
| Rochdale 2          |
| Sale 2              |
| South Manchester 2  |
| South Manchester 3  |
| Timperley 7         |
| Urmston 2           |

| NW Division 7 South (Central)   |
|---------------------------------|
| Alderley Edge Development       |
| Crewe Vagrants Development      |
| Deeside Ramblers Development    |
| Golborne & Prescott Development |
| Knutsford Development           |
| Sandbach 3                      |
| Sandbach Development            |
| Triton Development              |
| Whitchurch Development          |
|                                 |
|                                 |
|                                 |

| NW Division 7 East             |
|--------------------------------|
| Bowdon 8                       |
| Bowdon 9                       |
| Buxton Development             |
| City of Manchester Development |
| Didsbury Northern 8            |
| Horwich 2                      |
| Lymm 2                         |
| Sale 3                         |
| South Manchester 4             |
| Stockport Bramhall 3           |
| Timperley Development          |
| Wigan 2                        |