



## Finance Update

### An Apology

We are very sorry to say that the RATECARD for umpire fees for Appointed Games that was entered into GMS at the start of the season was not correct. The result is SC Hockey is £7K out of pocket in terms of H1 appointed umpire income versus umpire mileage claims. For information, the SC budget was set at breakeven for this season. As such the appointed fees are aimed to equal the umpire expenses. Quite a balancing act.



However, this error means that clubs will now receive a second invoice for the H1 appointed games with the extra that is due. Problems in Year 1 with GMS and a new South Central Finance Director.

Here is the rate card set by South Central Hockey.

Umpire Appointment Prem 1 & 2 (Per Umpire)	£25	per umpire
Umpire Appointment EH Competitions (Per Umpire)	£26.50	per umpire
Umpire Appointment General* (Per Umpire)	£20	per umpire
Umpire Appointment BUCS (Per Umpire)	£25	per umpire
Umpire Coaches and Advisors	£0	per person
Junior Games	£15	per umpire

### What other costs shall my club expect in this season?

Your Club will receive an invoice in April for any H2 Appointed umpires you have used. Apart from that all invoices for Membership and League admin have now been produced for adults and juniors in Season 21/22 - Phew ! The only other invoices you will receive will be for fines or any tournaments entered. Any feedback from you about this invoicing process would be happily received.

For your budgeting/planning for next season, SC Hockey will invoice clubs the following. The rates will be agreed at the AGM in summer 2022.

- Adult & Junior South Central Hockey Membership
- Adult & Junior League Administration
- Appointed Umpire Charges H1 & H2
- Junior tournament fees as used

### The Finance Director does not like playing Sherlock Holmes

When your treasure pays any SC invoice It would be appreciated if they could add the "Invoice Number" they are paying and/or your club name. This saves the Finance director many wasted hours having to don his Sherlock Holmes hat to discover where payment is from!



## Umpire Expense Payment

If you have submitted expenses and you have sent in your BACS details then the claim will have been paid. No BACS details then the claim cannot be paid. Send BACS details via the Google form that Simon Milford distributed or directly to the [finance@southcentral.hockey](mailto:finance@southcentral.hockey)

## Mini's Hockey

Prior to the creation of South Central the provision of hockey for U8's, U10's and U12's (Minis) was very fragmented. A number of local competitions within parts of the area, and in some case across neighbouring areas, playing different formats and not covering all ages.



The creation of South Central meant either retaining competitions that crossed the new area boundaries, exactly what the sport is trying to get away from, or trying to provide competitions within the new area. At an early meeting of the clubs it was identified that the geography of South Central means that Oxfordshire, Buckinghamshire and Berkshire combined makes a rough square, and so provides a lot of different fixture options for the 'long and thin' counties of Berkshire and Buckinghamshire. All of which have relatively few, but often quite large clubs.

In contrast Hampshire has a lot more but generally smaller clubs (from a juniors perspective) and is quite separate from the BBO group of counties from a travel perspective.

So it was agreed between the clubs that BBO would try operating as a single entity for Minis fixtures, and Hampshire would continue to organise as a separate entity (border clubs could choose where they played). The exception being the South Central Area Finals (for U10's and U12's) which were to be organised at a South Central level.

So has it worked? Yes (although not without some teething problems and plenty of lessons learned):

Hampshire had a good structure in place and that has continued without disruption, the only real change being one border club deciding to enter their U12's in to the BBO competition.

And within BBO the kids have got a lot of matches a cross all age groups between mid November and mid March – 6 BBO match dates for each of the age groups, plus for more experienced U10's and U12's the County competitions, followed by the South Central Finals in late March for the qualifiers (2 from each County).

Overall BBO has managed to both provide tougher games with a bit more travel for the more experienced players, and fairly even fixtures with less travel for the less experienced. But it's fair to say finding the balance between getting competitive games, not traveling too far, not have to send coaches to too many venues, and trying to ensure player development is a tricky balance that needs continual tweaking.

The common formats used seem to be enjoyed by everyone:

U8's play 4 a side mixed on 1/8<sup>th</sup> of a pitch with 4 cone goals inside the pitch that you have to run through carrying the ball to score (from either side). With 16 at a venue in four pools of 4 these events have a real festival feel.

U10's have played mainly 5 a side mixed on ¼ of a pitch, with keepers where available and rules similar to those for In2Hockey (the main difference being a penalty run-off as an alternative to PC's).

Although for the remainder of the season those clubs with players that are ready for the next level are playing In2Hockey (7 a side on a half pitch, separate boys and girls), which is the format for both the County competitions and South Central Finals.

And the U12's have all played In2Hockey (7 a side on a half pitch, separate boys and girls) from the start.

One of the big benefits of having common formats and rules is that these games are therefore a great opportunity to develop new umpires, and many clubs have started to take advantage of this.

As to the size of all this, there are some 40 U8 teams, up to 80 U10 teams and 90 U12 teams in the BBO competitions. It's a playing base of over 2000 children, which the sport should be looking to grow substantially in the coming seasons, as

## Area Officiating Committee

As I write we are heading towards the last 5 or so league game of the season – when promotion and relegation spots will be decided (although some have already been decided). As officials we need to ensure that we maintain our sharp focus on delivering the best hockey matches that players can play – so that the results best reflect their efforts throughout the season.

We still also need to keep making an effort to develop new umpires and, as mentioned in previous newsletters, we in South Central have a Level 1 Assessment manager (Ray Hipkin) who can provide advice and guidance on how to develop umpires and help to get them through the assessment process. Ray has a number of documents that he can send you (we will also get them on the South Central website - <https://southcentral.hockey>) and then we can all start to plan development activities and assessments around all of our other officiating activities.

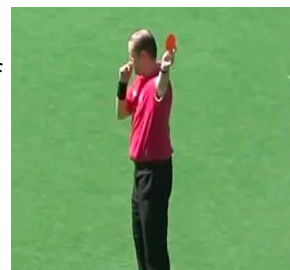
As previously, If you want help with sourcing an assessor for a Level 1 assessment then please let Ray know, with as much notice as possible ([ray@rayhipkin.co.uk](mailto:ray@rayhipkin.co.uk)). Ray will also be able to help if you wish to discuss how best to prepare for a Level 1 assessment.

## Discipline

Despite previous pleas we continue to see cards awarded to players, and coaches, for umpire abuse. This simply has to stop. We all understand that officials make mistakes – but, generally, a lot fewer mistakes than players make throughout a game.



Red cards have to be reported, whatever the level of match being played. Guidance on the red card process, and the forms involved, can be found here:



<https://southcentral.englishhockey.co.uk/adult-leagues-competitions/area-discipline>

The paperwork is simple – there should be no reason to not award a red card to avoid “doing the paperwork”. If you need help then just get in contact with any of the committee.

## Development

Success once again for the South Central development team as Angus Porter passes his assessment game and now joins the NPUA. Just reward for hard work from a number of people, not least Angus himself! Mike Farmer has also been nominated to the Level 3 Men’s panel.



If you want to join the development process please let Ginette know, by registering for her Development group. To register go to [www.umpiredev.co.uk](http://www.umpiredev.co.uk), select “Information for Individual Umpires” and scroll down to find the Development Group button. You should be a Gold member of England Hockey Officiating in order to benefit best from the development opportunities which are available.



## England Hockey Officiating

We are still waiting for England Hockey to enable the collection of membership fees for the EHO. There have been a number of delays but, hopefully, the process will begin soon.

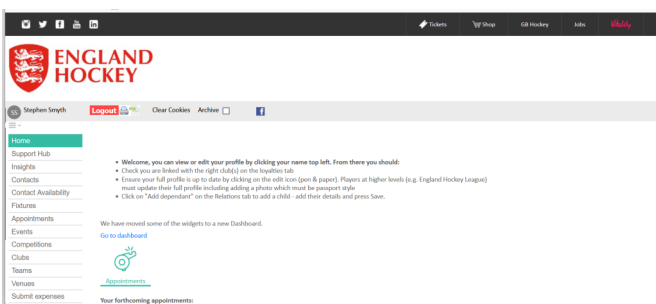
Another reminder that anyone who umpires, or will umpire, any game of hockey needs to register to be a member of EHO, at the Bronze (free) level if you don't wish to undertake appointments. If you are umpiring club games, or school games, or any other kind of hockey matches, you do need to be a registered member of EHO.

If you haven't already registered then please go to:

<https://gms.englishockey.co.uk/>

Select Register, Choose Officiating and go from there. Looking forward to seeing the numbers registered for South Central with EHO increasing, especially now that the teething troubles with registration seem to have largely been resolved.

For those of you who can't remember if you have registered or no, or who can't remember which membership level you chose, please get in touch and we can check the records for South Central. Sadly there doesn't yet seem to be a way to verify your membership level via GMS.



## Area Officiating AGM

We are getting towards that time of year! The Area AGM is likely to be held in July 2022 so the Area Officiating Committee AGM (more properly called the England Hockey Officiating South Central Branch AGM!) will likely be happening in May 2022 (provisionally Thursday 14<sup>th</sup>). More details to follow, along with agenda, joining instructions, how to nominate people for positions on the committee, what the voting process will be, and so on.

The committee details are shown elsewhere in this newsletter – if you'd like to help then either get in touch now, or think about putting yourself forward when the AGM comes around. We always need new people to help run the organisation.

## Website

We've updated the South Central officiating website: (<https://southcentral.englishockey.co.uk/officiating>) with new pictures of umpires from within South Central. Many thanks for Helen Ritchie for allowing us to use pictures from her website: <https://www.helenritchiephotography.co.uk/>. The pictures were all taken around Reading Hockey Club so if you want us to use pictures taken elsewhere then please let us know and send in the pictures.

## Match Results

Results can be found at:

[www.southcentral.hockey](http://www.southcentral.hockey) and click on the link in the top right hand corner where you can see all the leagues in our area

## Social Media

Social media sites for the South Central Area are:

<https://twitter.com/SouthCentralHo2>

<https://www.facebook.com/South-Central-Hockey-109636851265443>

<https://www.instagram.com/southcentralhockey/>

Rowena and her team are doing sterling work to build a better hockey community throughout South Central, but are still struggling to compile a complete list of Club Umpire Liaison Officers and a list of Club Umpire Developers. Please make sure that Rowena knows the details of these important post holders for your club.

We have recently developed a document, aimed mainly at Club Umpire Developers, with some advice and guidance on how to manage, and protect, young umpires so that they develop and maintain their umpiring careers and are not put off umpiring for life. The document will be appearing on the South Central website shortly and we will also try to send it out directly to Club Umpire Developers, where we have their contact details.

## Rules Refresher

9.13 Players must not tackle unless in a position to play the ball without body contact. Reckless play, such as sliding tackles and other overly physical challenges by field players, which take an opponent to ground and which have the potential to cause injury should attract appropriate match and personal penalties.



9.16 Players must not throw any object or piece of equipment onto the field, at the ball, or at another player, umpire or person. Following a penalty corner, if the ball hits any discarded equipment, such as a hand protector, knee pads or a face mask, a free hit should be awarded if this occurs outside the circle, and a penalty corner awarded if this occurs inside the circle.

## Operations

### South Central Hockey AGM



The South Central Hockey Ltd second AGM will take place online on **Thursday 14th July 2022 at 19:00**. Invitations will be sent out together with reports from each department in good time by England Hockey. Please mark this date in your calendars. At the AGM two Directors will be required to stand down and/or be re-elected. So if you would like to be considered for the Board please send your expressions of interest to [operations@southcentral.hockey](mailto:operations@southcentral.hockey) and a job description can be sent to you

Roles are:

- Chair
- Vice Chair
- Finance
- Governance,
- Operations

### Area Officiating AGM

The Area Officiating Committee AGM (more properly called the England Hockey Officiating South Central Branch AGM!) will likely be happening in May 2022.

# Buckingham Hockey Club

## in Europe



Buckingham Hockey Club Ladies 1s finally got to represent England at the European Hockey Federation Indoor Trophy in Alanya, Turkey from 18<sup>th</sup> 20<sup>th</sup> February after a long 2 year wait. It was not clear for a long time whether they would get the chance to play in Europe with all of the ups and downs of Covid. The original host country was Lithuania but this changed to Turkey after the Lithuanians decided they could no longer host or attend the competition. This was the first European experience for most of the team and they were keen to make the most of the experience.

The tournament was a round robin format with 6 teams competing for promotion to the European Cup in 2023. First up on Friday were Railway Union representing the island of Ireland. They had a small squad due to Covid and travel issues but were still an organised well disciplined side. Buckingham took time to break down their solid defensive shape but once they had found a chink in their armour, they finished with a solid 5-0 win with goals from Rebecca Van Arrowsmith x 2, Lottie Porter, Alex Naughalty and Olivia Strickland. Next were Clydesdale Western representing Scotland. Buckingham made an impressive start and a consistent attack resulted in Maddie Newlyn scoring early in the first quarter, Clydesdale equalised soon after and which Buckingham replied with a goal from Rebecca Van Arrowsmith the score at half time was 2-1. Clydesdale's Scottish international Fiona Semple brought them level making the score 2-2. The game then descended into a bit of mayhem with a yellow card for each side. Buckingham conceded 2 short corners late in the game which were well taken by Margery Justice,

final score 2-4. The girls were disappointed, and the game brought home to them how much indoor can change in a short space of time.

**Day 2** brought renewed confidence and determination. The first game was against SK Slavia Prague representing the Czech Republic. Again, Buckingham started well and put real pressure on the Czech team and scored first. They responded with some robust tackles and increased physicality. The scoring ebbed and flowed with Slavia Prague players being given 2 yellow cards in the 3<sup>rd</sup> and 4<sup>th</sup> quarter. Buckingham just couldn't find a way to score and the bad tempered game finished 5-6, again another frustrating end the game. Next up were Arminem representing Austria. They were a well disciplined team who played indoor in the most similar way to the way we play in England. Buckingham had the upper hand for most of the game with incredible amounts of pressure which the Austrians held off, never really looking like they could do enough to create anything. Just as the game was nearing the end Buckingham conceded a corner which Arminem scored, final score 0-1. It was becoming a frustrating tournament!

**Day 3** the final day left one game to play against the hosts Gaziantep. They were

by far the stand out side of the tournament with several indoor international players in the squad. Playing a totally different style of hockey they were confident ball carriers and played incredibly quick, direct indoor hockey. Buckingham stepped up and easily matched the standard of the Turks. It was a fantastic game of indoor with Buckingham determined to take the game to Gaziantep. At times Gaziantep were frustrated by how difficult Buckingham were to break down. Unable to convert their corners and Gaziantep scoring theirs the final score was 2-4.

Buckingham HC are incredibly proud of the way the players stepped up to their first European challenge. It was a big learning curve playing 5 games in 3 days against unknown opposition. The whole team are determined to earn the right to go again next year when they play in the Super Sixes. Thank you to all the travelling supporters and of course our sponsor Laithwaites Wines without them the team could not have travelled to Turkey and experienced European Hockey.

