

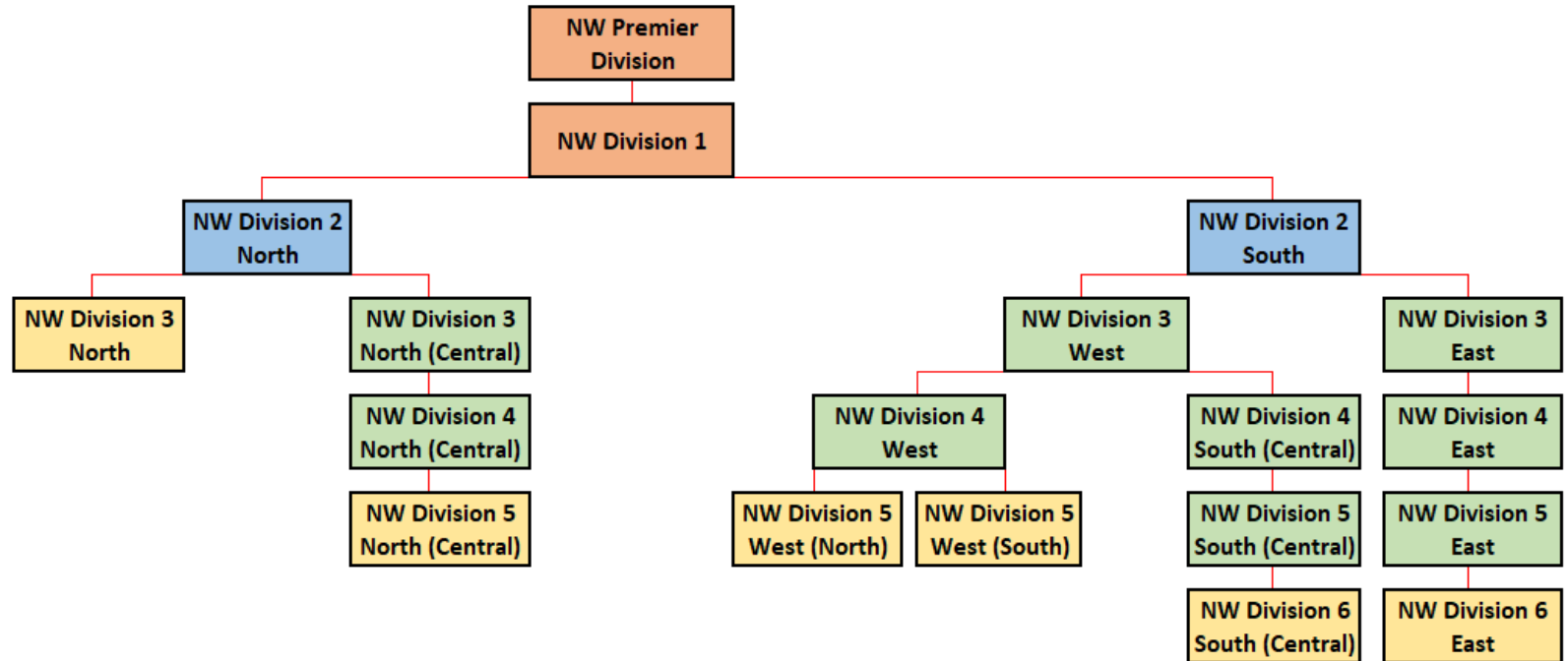


NORTH WEST HOCKEY



2024-2025 Women's Divisions

- Tier 4
- Tier 5
- Tier 6
- Tier 7
- Tier 8
- Tier 9
- Tier 10
- Tier 11



Division Structure may be adjusted in the 2025-2026 season to accommodate new Clubs and Team entries



NORTH WEST HOCKEY

Grade 2

Grade 3

Grade 4

Grade 5

2024-2025 Women's Divisions

| NW Premier Division |
|----------------------------|
| Brooklands Poynton 1 |
| Chester 1 |
| Deeside Ramblers 1 |
| Garstang 1 |
| Kirkby Stephen 1 |
| Lancaster 1 |
| Liverpool Sefton 1 |
| Longridge 1 |
| Neston 1 |
| Timperley 1 |
| Timperley 2 |
| Wilmslow 1 |

| NW Division 1 |
|------------------------|
| Alderley Edge 2 |
| Brooklands Poynton 2 |
| Carlisle 1 |
| Didsbury Greys 1 |
| Didsbury Northern 2 |
| Formby 1 |
| Fylde 2 |
| Lancaster University 1 |
| Lymm 1 |
| Prescot 1 |
| Preston 1 |
| Winnington Park 1 |



NORTH WEST HOCKEY

Grade 2

Grade 3

Grade 4

Grade 5

2024-2025 Women's Divisions

| NW Division 2 North |
|--------------------------------|
| Chorley Phoenix 1 |
| Clitheroe Blackburn Northern 1 |
| Fylde 3 |
| Garstang 2 |
| Kirkby Lonsdale 1 |
| Lancaster & Morecambe 1 |
| Lytham St Annes 1 |
| Penrith 1 |
| South Lakes 1 |
| Southport 1 |
| Ulverston 1 |
| Wigton 1 |

Additional Division to be created to accommodate new Club and Team entries in the 2025-2026 season if required

| NW Division 2 South |
|----------------------|
| Bolton 1 |
| Bowdon 3 |
| City of Manchester 1 |
| Crewe Vagrants 1 |
| Didsbury Northern 3 |
| Liverpool Sefton 2 |
| Macclesfield 1 |
| Northop Hall 1 |
| Oldham 1 |
| Oxton 1 |
| Urmston 1 |
| Wrexham Glyndwr 1 |

| NW Division 3 North |
|----------------------------|
| Ambleside 1 |
| Carlisle 2 |
| Carlisle 3 |
| Dalston 1 |
| Kendal 1 |
| Kendal Development |
| Keswick 1 |
| Kirkby Stephen 2 |
| Kirkby Stephen 3 |
| Kirkby Stephen Development |
| Penrith 2 |
| Sedbergh 1 |
| Wigton 2 |

| NW Division 3 North (Central) |
|--------------------------------|
| Brookfield 1 |
| Clitheroe Blackburn Northern 2 |
| Fylde 4 |
| Garstang 3 |
| Lancaster 2 |
| Lancaster Nomads 1 |
| Leyland & Chorley 1 |
| Longridge 2 |
| Pendle Forest 2 |
| Preston 2 |
| Windermere 1 |

| NW Division 3 West |
|--------------------|
| Alderley Edge 3 |
| Cheshire Blues 1 |
| Chester 2 |
| Chester 3 |
| Clwb Hoci Eirias 1 |
| Deeside Ramblers 2 |
| Liverpool Sefton 3 |
| Lymm 2 |
| Neston 2 |
| Oxton 2 |
| Whitchurch 1 |
| Wilmslow 2 |

| NW Division 3 East |
|------------------------|
| Bowdon 4 |
| Brooklands Poynton 3 |
| Buxton 1 |
| City of Manchester 2 |
| Didsbury Greys 2 |
| Didsbury Northern 4 |
| Manchester Moss Park 1 |
| Sale 1 |
| Stockport Bramhall 1 |
| Stockport Bramhall 2 |
| Timperley 3 |
| Wigan 1 |



NORTH WEST HOCKEY

Grade 2

Grade 3

Grade 4

Grade 5

2024-2025 Women's Divisions

Consultation to take place with Clubs in West, West (North), West (South), South (Central) and East divisions regarding preferred geographical area

| NW Division 4 North (Central) |
|--------------------------------|
| Brookfield 2 |
| Chorley Phoenix 2 |
| Clitheroe Blackburn Northern 3 |
| Fylde 5 |
| Garstang 4 |
| Lancaster & Morecambe 2 |
| Lytham St Annes 2 |
| Pendle Forest 3 |
| Preston 3 |
| Southport 2 |
| |
| |

| NW Division 4 West |
|---------------------|
| Bangor City 1 |
| City of Liverpool 1 |
| Clwb Hoci Eirias 2 |
| Formby 2 |
| Liverpool Sefton 4 |
| Merseyside Police 1 |
| Mossley Hill 1 |
| Northern 1 |
| Northop Hall 2 |
| Rhyl and District 1 |
| Runcorn 1 |
| West Derby 1 |

| NW Division 4 South (Central) |
|-------------------------------|
| Alderley Edge 4 |
| Crewe Vagrants 2 |
| Deeside Ramblers 3 |
| Deeside Ramblers 4 |
| Golborne 1 |
| Knutsford 1 |
| Macclesfield 2 |
| Sandbach 1 |
| Triton 1 |
| Warrington 1 |
| Wilmslow 3 |
| Winnington Park 2 |

| NW Division 4 East |
|------------------------|
| Bowdon 5 |
| Bowdon 6 |
| Bury 1 |
| City of Manchester 3 |
| Didsbury Northern 5 |
| Heaton 1 |
| Horwich 1 |
| Manchester Manto 1 |
| Manchester Moss Park 2 |
| Oldham 2 |
| Sale 2 |
| Timperley 4 |

| NW Division 5 North (Central) |
|-------------------------------|
| Brookfield Development |
| CBN Development |
| Fylde Development |
| Garstang Development |
| Lancaster 3 |
| Lancaster Nomads 2 |
| Leyland & Chorley 2 |
| Leyland & Chorley Development |
| Longridge Development |
| |
| |

| NW Division 5 West (North) |
|----------------------------|
| Formby Development |
| Liverpool Sefton 5 |
| Mossley Hill 2 |
| Neston Development |
| Northern 2 |
| Oxton 3 |
| Oxton Development |
| Prescot 2 |
| Runcorn Development |
| St Helens 1 |
| St Helens 2 |
| West Derby 2 |

| NW Division 5 West (South) |
|------------------------------|
| Bangor University 1 |
| Bebington 1 |
| Buckley 1 |
| Chester 4 |
| Clwb Hoci Eirias Development |
| Denbigh 1 |
| Neston 3 |
| Northop Hall Development |
| Wrexham Glyndwr 2 |
| |
| |

| NW Division 5 South (Central) |
|-------------------------------|
| Alderley Edge 5 |
| Alderley Edge 6 |
| Crewe Vagrants 3 |
| Lymm 3 |
| Lymm 4 |
| Macclesfield 3 |
| Oswestry 1 |
| Sandbach 2 |
| Whitchurch 2 |
| Wilmslow 4 |
| |
| |

| NW Division 5 East |
|----------------------|
| Bolton 2 |
| Didsbury Greys 3 |
| Didsbury Northern 6 |
| Glossop 1 |
| Oldham 3 |
| Rochdale 1 |
| Sale 3 |
| Stockport Bramhall 3 |
| Stockport Bramhall 4 |
| Timperley 5 |
| Timperley 6 |
| Wigan 2 |



NORTH WEST HOCKEY

Grade 2

Grade 3

Grade 4

Grade 5

2024-2025 Women's Divisions

| NW Division 6 South (Central) |
|-------------------------------|
| Alderley Edge Development |
| Crewe Vagrants 4 |
| Deeside Ramblers 5 |
| Golborne 2 |
| Macclesfield 4 |
| Triton 2 |
| Warrington Development |
| Whitchurch 3 |
| Wilmslow 5 |
| Winnington Park Development |
| |
| |

| NW Division 6 East |
|--------------------------------|
| Bolton Development |
| Bowdon 7 |
| Buxton 2 |
| City of Manchester 4 |
| Didsbury Greys Development |
| Didsbury Northern Development |
| Manchester Moss Park 3 |
| Stockport Bramhall Development |
| Urmston 2 |
| Urmston Development |
| |
| |