

Ennis-Flint® by PPG Thermoplastic

Thermoplastic

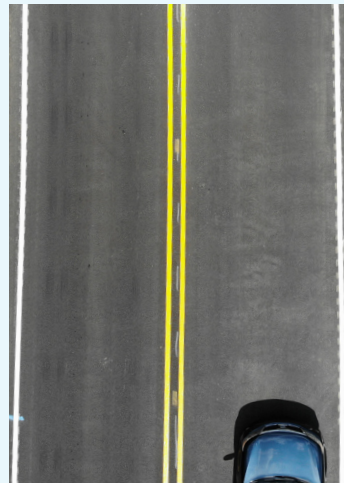
For streets, highways,
local, rural roads and
parking lots



A full line of durable thermoplastic products

ENNIS-FLINT® by PPG Thermoplastic pavement markings are a 100% solid, user safe compound containing pigments, glass beads, binder and filler which becomes liquid when heated. This formulation provides toughness, flexibility and bond strength while holding components together.

Intermixed and drop-on glass beads provide retroreflectivity for nighttime visibility of the pavement marking.



Formulations

Alkyd: made from wood-derived resins, a renewable natural resource, it is impervious to oil and diesel fuels

Hydrocarbon: made from petroleum-derived resins. Best used for long-line applications



Installation

Mechanically adheres to asphalt pavements. Adhesive bond to concrete (requires primer)

Formulated for quick dry of <2 minutes at temperatures as low as 50°F (10°C)

Application methods include spray, ribbon or screed



Driver Safety

Engineered to minimize lane interruptions and closures

VIBRALINE® profiled markings provide enhanced wet-reflective visibility and deliver an audible “rumble” to alert motorists of lane departure



Compliance/Certification

Engineered to meet your specification whether federal, state, local, or commercial based. Facility is ISO 9001:2015 certified for the design, development and manufacturing of thermoplastic

This document contains general information only and should not be construed as creating any warranties, express or implied. Please contact a PPG representative for additional information.

The PPG Logo is a registered trademark and *We protect and beautify the world* is a trademark of PPG Industries Ohio, Inc. Ennis-Flint and Vibraline are registered trademarks of the PPG Group of Companies. The IN Logo is a registered trademark of LinkedIn Corporation. ©2022 PPG Industries, Inc. All rights reserved. 02/22 TS013

