

PAINTMANAGER® XI

Paint Shop Interface (PSI) Program Configuration

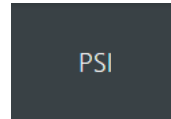
Before proceeding with the following instructions ensure the needed folders have been created, shared, and have the necessary security settings. See the QRG, “PSI Folder Configuration”, for reference.

Enable PSI

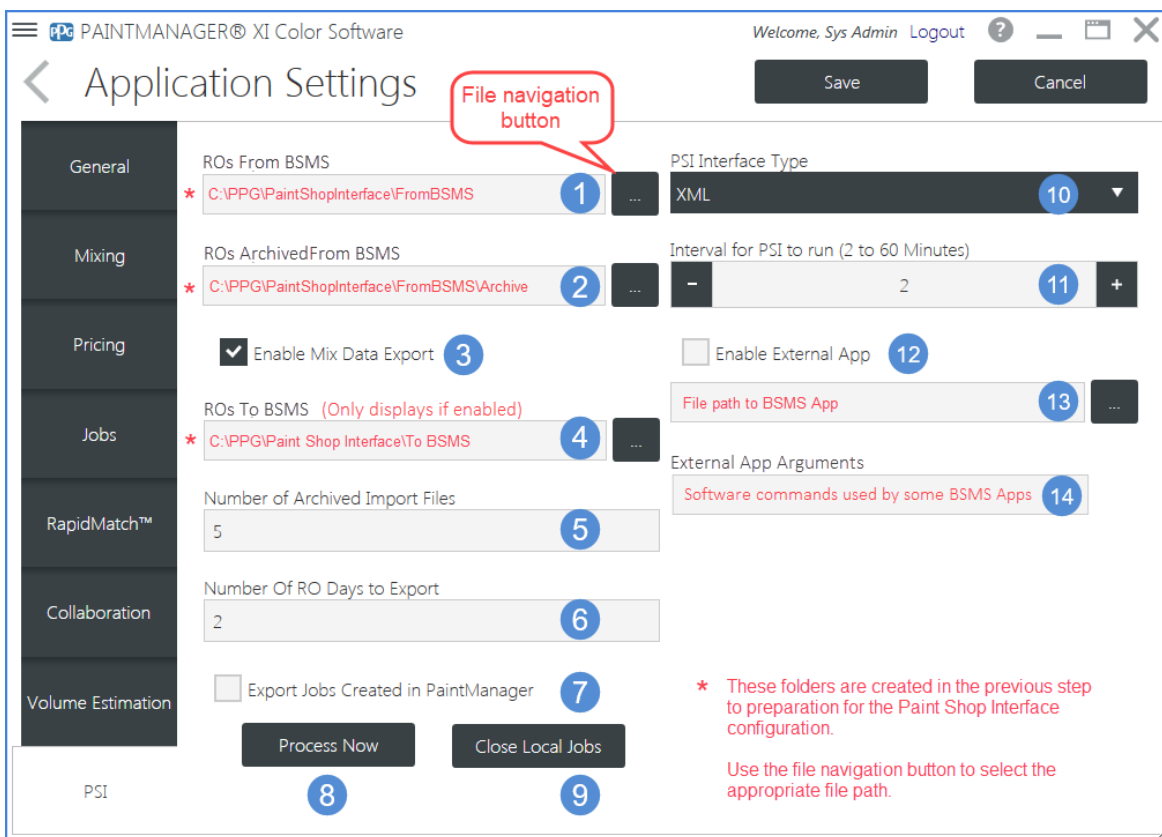
1 Navigate to **Settings, Applications Settings, General** tab and enable PSI.



2 Select the newly visible **PSI** tab to configure settings.



Configuration Settings



1 Use the file navigation button to locate and select the folder shown.

2 Use the file navigation button to locate and select the folder shown.

3 Check if BSMS supports two-way communication.

4 Use the file navigation button to locate and select the folder shown.

5 The default value for this field is OK. (This value can be increased for troubleshooting purposes.)

6 The default value for this field is OK

PAINTMANAGER® XI

Paint Shop Interface Program Configuration

Configuration Settings Continued

- 7 Ensure this box is unchecked.
- 8 Use to immediately process available import files and initiate the import/export process for BSMS that is configured with an external application in Step 13.
- 9 Closes all Jobs that did not transfer from the last import from the BSMS. (Old job cleanup.)
- 10 All BSMS use XML except Mitchell which is discussed in the section below.
- 11 Set for 2 to 5 minutes for BSMS without an external app and 30 to 60 minutes for those that do.
- 12 Used only for BSMS that use an external app. (See QRG for specific BSMS to see if this is required.)
- 13 BSMS external App. (See QRG for specific BSMS for instructions.)
- 14 Currently only used by *SummitCRS*. (See QRG for this BSMS for instructions.)

Mitchell Configuration Settings

- 1 Select the Mitchell Interface Type.
- 2 Automatically set for 2 hours and can't be changed.
- 3 This ID number is found in the Mitchell Software. See the Mitchell QRG for specific instructions.
- 4 ZIP code as it exists in the Mitchell database.
- 5 US or Canada.

Welcome, Sys Admin Logout ? - □ ×

Save Cancel

PSI Interface Type
Mitchell 1

Interval for PSI to run (2 to 24 Hours)
- 2 2 +

Mitchell Shop ID
1234 3

Mitchell Shop Zip Code
1234 4

Mitchell Shop Country
US 5

Mitchell® Example