



Fine texture trendy colors for indoor and outdoor applications



High-quality fine texture finishes

Rich colors with matte, premium finishes are trending in the architectural market. The uniformly fine texture of the coating creates a soft, matte finish and gives solid colors an elegant, sophisticated and contemporary metallic look. Twenty of the most popular hues in matte finishes are now in stock for immediate supply.

The PPG ENVIROCRON® PCS P4 Series is a high-quality, polyester-based powder coating designed to meet the requirements and needs of the architectural market. The robust and highly scratch-resistant finish extends product life, an important consideration for companies interested in sustainability.

Thanks to its enhanced edge coverage, the series offers excellent corrosion protection for aluminum extrusion and sheets, steel and galvanized steel substrates. The product formulation is resistant to contamination and allows for easy application.

Product benefits

- High-scratch resistance
- Good hiding power to cover casting defects
- Low sensitivity to product contamination in the paint line
- Good edge coverage due to high viscosity

Product certificates

- Qualicoat Class 1 P-1767
- GSB standard 132g approved

Applications

- Urban furniture
- Metal office furniture
- Steel or galvanized steel for cladding
- Aluminum profiles and sheets
- Verandas
- Doors
- Window frames
- Facades



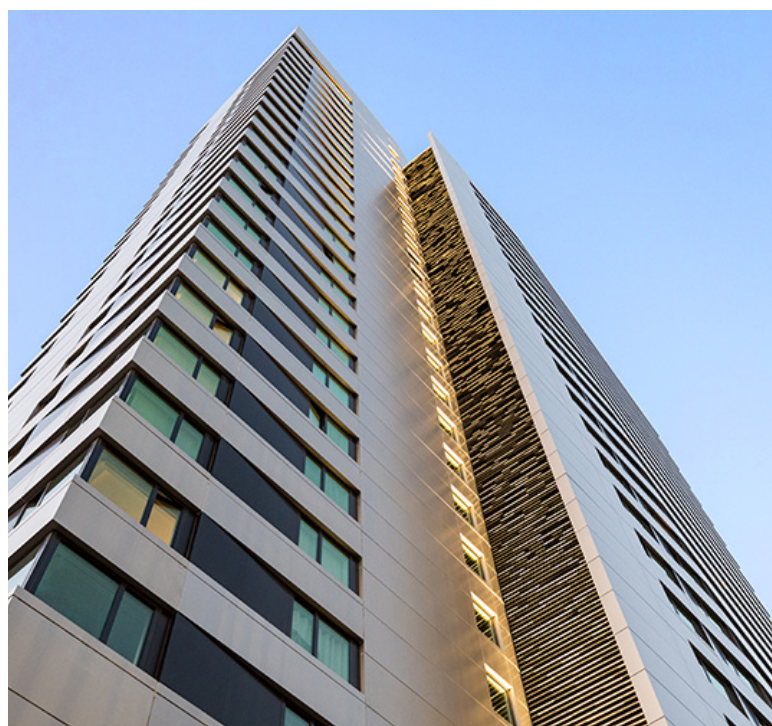


Fine texture colors available on stock

Color	RAL	SAP Code	Item Code
	1015	442250	P474P015R-YD
	3004	442251	P474R004R-YD
	3005	442388	P474R005R-YD
	5010	442386	P474B010R-YD
	6005	442387	P474E005R-YD
	7012	442249	P474G012R-YD
	7016	441693	P474G016R-YD
	7021	441690	P474G021R-YD
	7022	442603	P474G022R-YD
	7024	442489	P474G024R-YD
	7035	442490	P474G035R-YD
	7039	442201	P474G039R-YD
	8014	442491	P474H014R-YD
	8019	442492	P474H019R-YD
	9003	441794	P474W003R-YD
	9004	442493	P474N004R-YD
	9005	441689	P474N005R-YD
	9010	441691	P474W010R-YD
	9011	442202	P474N011R-YD
	9016	441692	P474W016R-YD

Product Characteristics	
Color	20 colors available on stock (other RAL colors upon request)
Gloss	4 - 8 GU
Film thickness	60 - 80 µm
Shelf life	24 months at max 30 °C
Curing conditions	15-37 min. at 170°C 10-32 min. at 180°C 7-22 min. at 190°C
Application	Tribo / Corona

Performance Properties		
Adhesion	ISO 2409	Gt0
Impact resistance	ISO 6272/ ASTMD2794	2.5 Nm / 22 inch-pound
Cylindrical Mandrel Bending	ISO 1519	5 mm
Erichsen Cupping	ISO 1520	5 mm
Humidity chamber	ISO 6270-2	1000 hrs pass - no blistering
Weathering - Florida	ISO 2810	1 year, residual gloss ≥ 50%



This document contains general information only and should not be construed as creating any warranties, express or implied. Please contact a PPG representative for additional information.

The PPG Logo and Envirocron are registered trademarks of PPG Industries Ohio, Inc. The IN Logo is a registered trademark of LinkedIn Corporation. ©2022 PPG Industries, Inc. All rights reserved. 01/22 ICI150

