



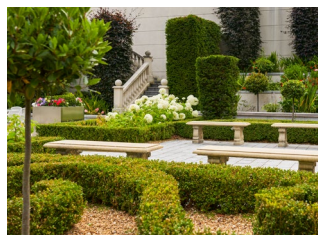
POWERSCOURT  
HOTEL RESORT SPA





Nestled among ancient trees, within the granite walls of one of Ireland's most renowned estates, you'll find Powerscourt Hotel, Resort & Spa.

With 198 lavishly furnished guest rooms including 92 suites and 36 holes of championship-quality golf, the resort is a stunning complement to the sublime formal gardens of historic Powerscourt Estate in County Wicklow. Business and leisure visitors enjoy impeccable service and a wealth of comforting amenities including 3 delectable dining options, a traditional Irish pub, a pampering Spa, a state-of-the-art Fitness Suite and exciting recreation options.



## LOCATION

South of Dublin in the region known as the Garden of Ireland – 25 minutes from the city centre, 30 minutes from Dublin International Airport.

## ACCOMMODATION

Powerscourt Hotel offers 198 distinctive guest rooms, including 92 suites. All rooms are opulently furnished and are some of the largest hotel rooms in Ireland, with the entry level Deluxe rooms 45 square metres/504 square feet in size, and Suites from 65 square metres/731 square feet. Many of these hotel rooms feature floor-to-ceiling windows, panoramic views and terraces.

## DINING

**Sika – with an emphasis on local excellence and seasonality, Sika Restaurant at Powerscourt Hotel offers superior Irish contemporary cooking against a spectacular backdrop of Wicklow’s hills and mountains through tall glass walls. Luxurious and comfortable, it can seat up to 160 people and is available for exclusive bookings for both lunch and dinner.**

Sugar Loaf Lounge – where exquisite afternoon tea is served and mouth-watering cocktails are prepared.

**McGills – an authentic Irish pub offering classic Irish beers and whiskeys with homecooked rustic Irish food.**

ESPA Café – offering health oriented breakfast and lunch to guests during their spa retreat.

## MEETING & EVENTS AMENITIES

**More than 1,111 sq metres/ 12,030 sq feet of meeting and conference space**

558 sq metre/5,959 sq foot Ballroom dividable into three salons

**10 meeting rooms**

Outdoor “secret” garden available for events and receptions

**Private entrance to all meeting and conference facilities**

Business centre

**High Speed 60mb bandwidth WiFi**

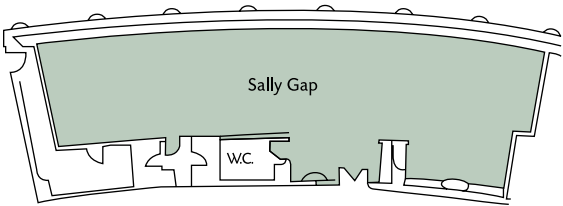
17th Century Powerscourt House Ballroom for off-site events

**On-site audiovisual expertise**

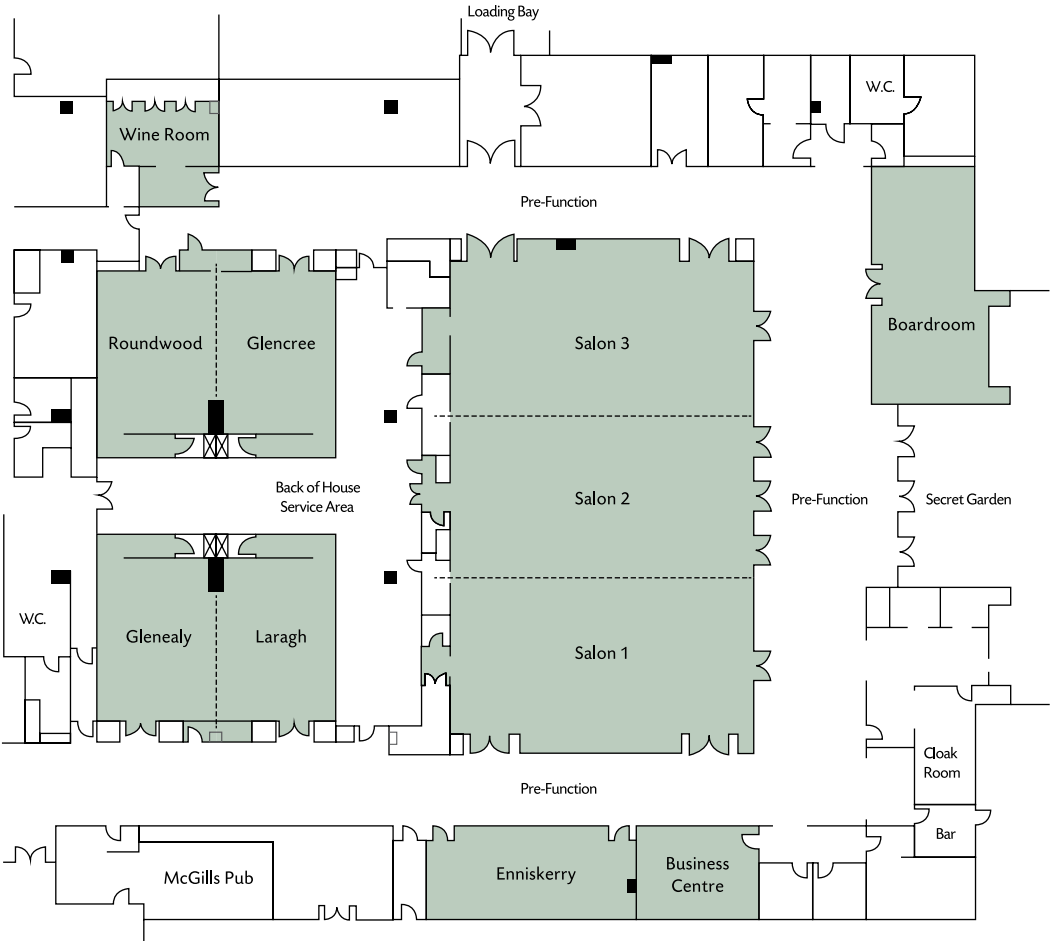
Dedicated Meetings

& Events planner

5TH FLOOR



3RD FLOOR



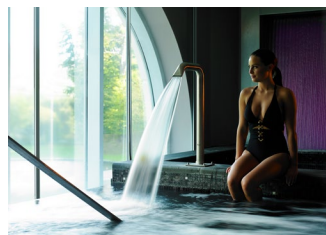


### MEETING SPACE

Room	Dimensions				Ceiling Height		Reception	Banquet Seating	Theatre Seating	Classroom Seating	U-Shape Seating	Boardroom Seating	Hollow Seating	Cabaret Seating
	Sq ft	Sq m	ft	m	ft	m	Seating Capacity							
Ballroom	5,959	558	59x101	18x31	12	4	600	400	500	240	72	80	-	186
Salon 3	1,888	189	59x32	18x10.5	-	-	200	120	200	80	32	38	38	60
Salon 2	1,711	169	59x29	18x9.4	-	-	200	140	200	80	32	38	38	60
Salon 1	1,888	189	59x32	18x10.5	-	-	200	120	200	80	32	38	38	60
Glencree	667	63	29x23	9x7	7	2	75	50	56	24	18	20	30	18
Roundwood	667	63	29x23	9x7	7	2	75	50	56	24	18	20	30	18
Glencree & Roundwood (combined)	1,334	126	29x46	9x14	-	-	150	100	120	36	26	30	36	36
Laragh	667	63	29x23	9x7	7	2	75	50	56	24	18	20	36	18
Glenealy	667	63	29x23	9x7	7	2	75	50	56	24	18	20	36	18
Laragh & Glenealy (combined)	1,334	126	29x46	9x14	-	-	150	100	120	36	26	30	30	36
Enniskerry	560	55	40x14	4.5x12.4	8	2	50	30	45	16	18	20	-	18
Boardroom	810	80	45x18	14x5.7	12	4	-	-	-	-	16	-	-	18
Mount Usher Room	394	36.5	22.8x17.3	6.95x5.26	7	2	-	-	-	-	-	-	-	-
Pre Function Space	5,812	540	-	-	-	-	-	-	-	-	-	-	-	-
Sally Gap	1,890	175	90x21	27.4x6.4	7.97	2.43	100	150	180	70	42	-	-	60

\*Actual seating capacities will be determined by your AV needs





## GUEST ROOM AMENITIES

**Marble bathroom and signature Powerscourt bath essentials**

Separate rainforest showers

**Lighted make-up mirror and hair dryer**

Separate WC

**Large sitting area or room in each suite**

Double vanities

**Electronic finger tip panels for controlling lighting and air-conditioning**

Plush bathrobes

**High-speed complimentary WiFi**

Recessed TV in the bathrooms

**Fully stocked honour bar**

Safety deposit box

**Interactive TV's in the bedroom and the sitting room**

24h in-room dining

**Multi-line telephones with voicemail**

Daily housekeeping service

**Accessible rooms available**

Air conditioning and temperature control

**Daily newspaper available**

Tea and Coffee making facilities

## RESORT AMENITIES

**A 2,790-sq metre/30,000-sq ft**

**Spa with 20 Treatment rooms**

A 20-metre Swarovski crystal-lit indoor pool, state-of-the-art Thermal Suite

**Fitness Suite available 24 hours**

Complete Concierge services

**36 hole championship quality Golf Club**

Landscaped Gardens and

Historic House dating back to 1731

**The River Walk, a private 5km scenic walk within the estate**

Babysitting services and

Children's Games Room

**Scenic mountain walking trails**

Complimentary bicycle hire

**Off road 4x4**

**Teambuilding activities**

Trout and salmon fishing/fly fishing (nearby)

**Horse riding for all skill levels (nearby)**



## WEATHER

**Spring (Mar, Apr, May):**

**High 12°C/53°F; low 5°C/41°F**

**Summer (June, July, Aug):**

**High 20°C/68°F; low 11°C/51°F**

**Autumn (Sept, Oct, Nov):**

**High 13°C/56°F; low 7°C/45°F**

**Winter (Dec, Jan, Feb):** High

8°C/46°F; low 3°C/37°F

## NEARBY ATTRACTIONS

**Powerscourt Estate and Gardens, 47 acres of magnificent formal gardens (on the resort)**

Powerscourt Waterfall, Ireland's highest, where waters cascade to the Dargle River below (6km/3.5 miles away)

**Glendalough, the ancient lakeside monastic settlement founded by St. Kevin (29km/18 miles away)**

Brittas Bay, a delightful beach of powdery sand and coastal dunes (40km/25 miles away)

**The Sally Gap and Wicklow Way, pathways of stunning mountain scenery (16km/10 miles away)**

Dublin, home to Trinity College, St. Patrick's Cathedral, Dublin Castle & much more (24km/15 miles away)

**Guinness Storehouse, the story of the iconic black pint (25km/16 miles away)**

## SHOPPING

**Grafton Street, Dublin's famously fashionable shopping venue featuring exclusive stores such as Brown Thomas (24km/15 miles away)**

Dundrum Shopping Centre, Ireland's newest and most modern offering with prestigious stores such as Harvey Nichols and more (10km/6 miles away)

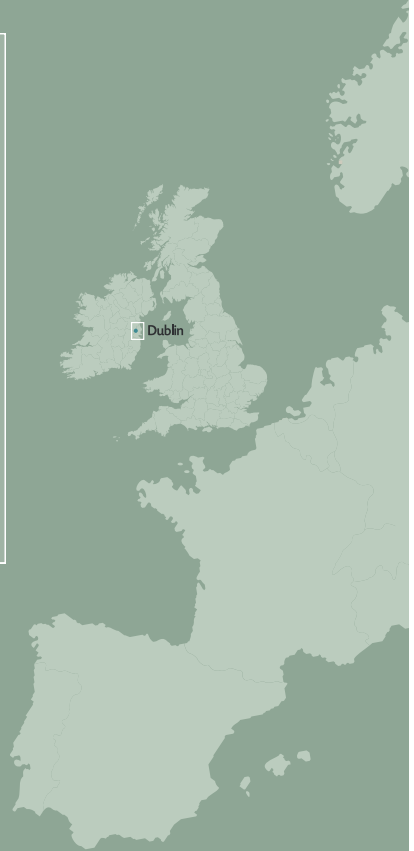
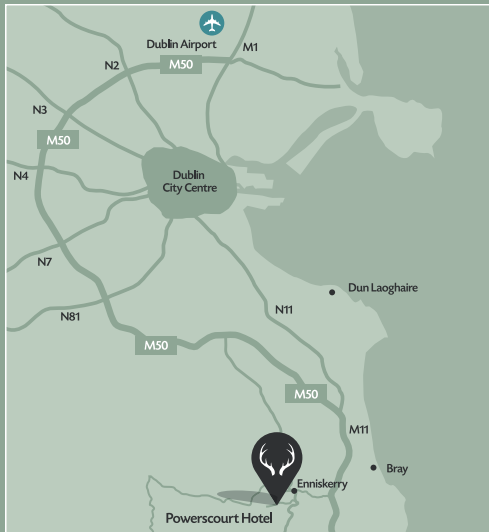
**Avoca Handweavers, for traditional Irish clothing, household goods, cosmetics and farm produce (on the resort and at Kilmacanogue (5km/3 miles away)**

Powerscourt Garden Pavilion, offering an exclusive array of items for home and garden (on the resort)



# POWERSCOURT

HOTEL RESORT SPA



## Powerscourt Hotel Resort Spa

Powerscourt Estate, Enniskerry, County Wicklow, Ireland.

t: +353 1 274 8888 e: [sales@powerscourthotel.com](mailto:sales@powerscourthotel.com)

[www.powerscourthotel.com](http://www.powerscourthotel.com)



GDS Codes –

**Amadeus:** DUBAKA, **Sabre:** 0048554, **Galileo:** 63424, **Worldspan:** DUBAK

AUTOGRAPH  
COLLECTION®  
HOTELS